



12/27 Lavender Crescent Lavender Bay NSW

1 1

Affordable opportunity to buy into one of Sydney's most prized waterfront suburbs. Historic Lavender Bay has always attracted those with a passion for beauty. It's no wonder that an impressive list of artists and poets have lived in, loved and featured Lavender Bay in their work.

This protected harbour cove, with its majestic Canary Island Palms and Moreton Bay Fig trees framing a jaw dropping view of the sparkling Harbour, the Opera House, Harbour Bridge, Sydney city skyline and Luna Park, is as iconic as it comes. Imagine the convenience of owning your own ground floor apartment within the secure landmark, "The Durham" apartment block, set in the heart of one of Sydney's finest locations!

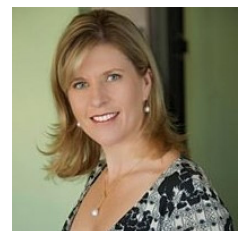
- Sought after 'entry level' position, ideal first home, investment or city pad

Price : \$ 820,000

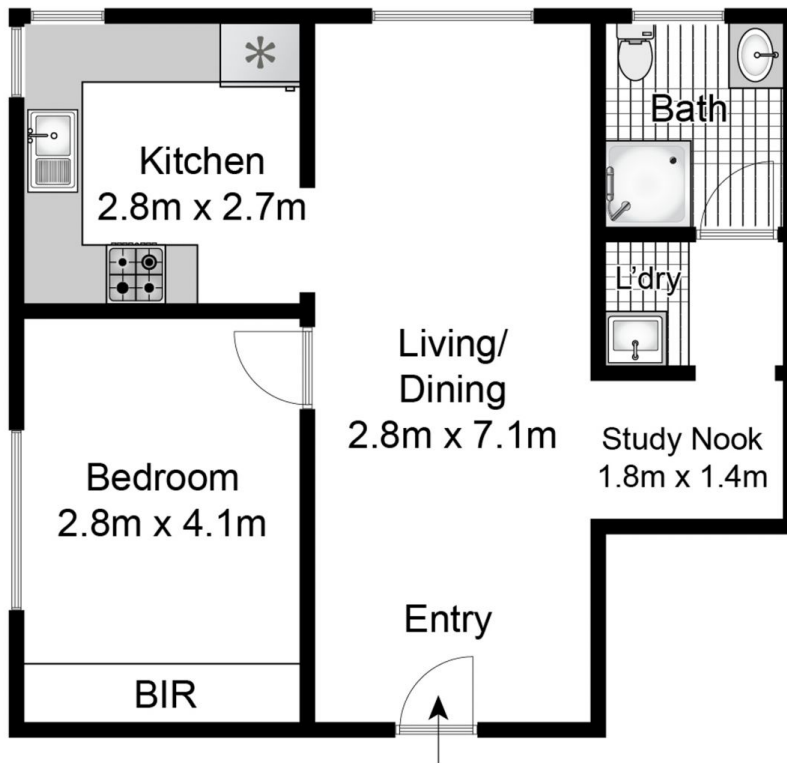
View : <https://www.blakeproperty.com.au/sale/nsw/north-shore-lower/lavender-bay/residential/unit/7901911>



Andrew Blake
02 9973 4444



Melinda Blake
02 9973 4444



Internal Area: 53m²

Storage Cage Area: 2m²

Total Area: 55m²

Whilst BWRM & Blake Property has made every attempt to ensure the accuracy of the floor plan and site plan contained here, measurements are approximate and no responsibility is taken for any error, omissions or mis-statements. This plan is for illustrative purposes only. Boundaries are approximate only and should not be relied upon.

12/27 Lavender Crescent, Lavender Bay

