



29 Kanimbla Crescent Bilgola Plateau NSW

4 🛏 3 🚿 2 🚗

Hear the waves and enjoy the most panoramic vista, stretching all the way to Vacluse Lighthouse, across Long Reef, Warriewood, Mona Vale and Barangaroo! This meticulously built, 4 bedroom home is jampacked with quality, eco-conscious features and the result, is an organic fusion of practicality, beauty and comfort.

Price : \$ 2,350,000

View : https://www.blakeproperty.com.au/sale/nsw/north-ern-beaches/bilgola-plateau/residential/house/7810080

Situated in a quiet cul-de-sac, you can drive into the undercover carport with level entry to the front door. Designed for maximum natural light and privacy, the solid construction and double-glazed windows & doors provide insulated quietness. Soaring 4.2 m ceilings (kitchen, dining, lounge) with skylights, underfloor heating, R/C aircon, ceiling fans and beautiful reclaimed timber features.

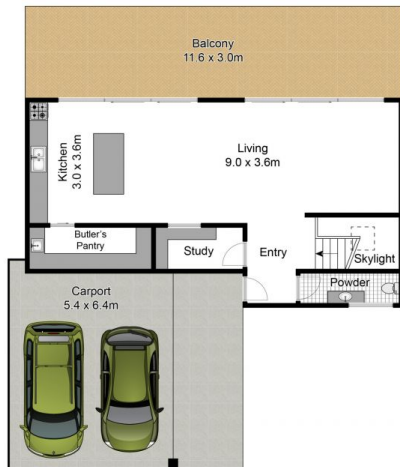


Andrew Blake
02 9973 4444

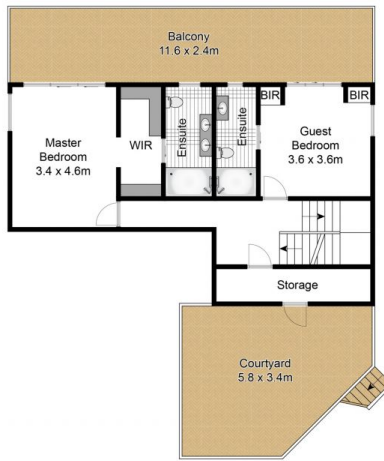


Zac Pearson
02 9973 4444

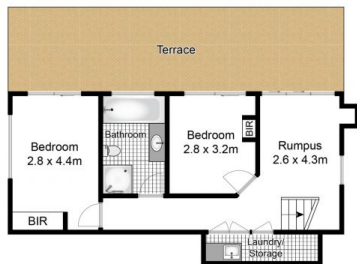
Entrance level with direct level access:
? Open plan living/dining/kitchen



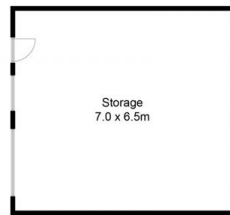
Entry Level



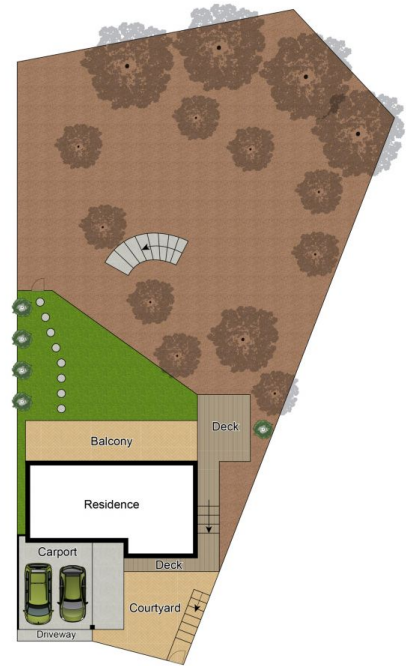
Middle Level



Lower Level



(Not In Position)



Site Plan

Internal Area: 201m²
 Terrace Area: 68m²
 Carport Area: 35m²
 Total Area: 304m²
 Land Area: 785m²

Whilst BWRM & Blake Property has made every attempt to ensure the accuracy of the floor plan and site plan contained here, measurements are approximate and no responsibility is taken for any error, omissions or mis-statements. This plan is for illustrative purposes only. Boundaries are approximate only and should not be relied upon.



29 Kanimbla Crescent, Bilgola Plateau

