



25 Waterview Street Mona Vale NSW

3 2 1

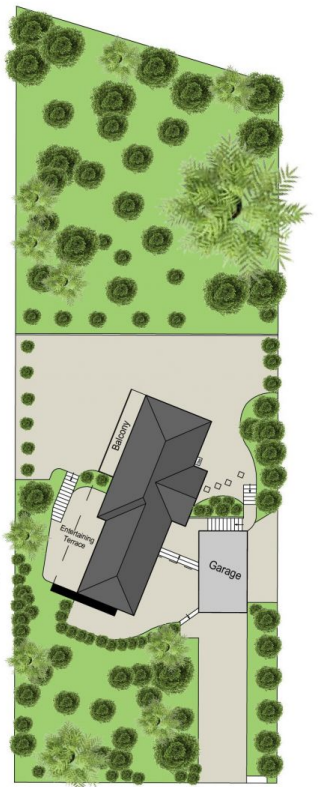
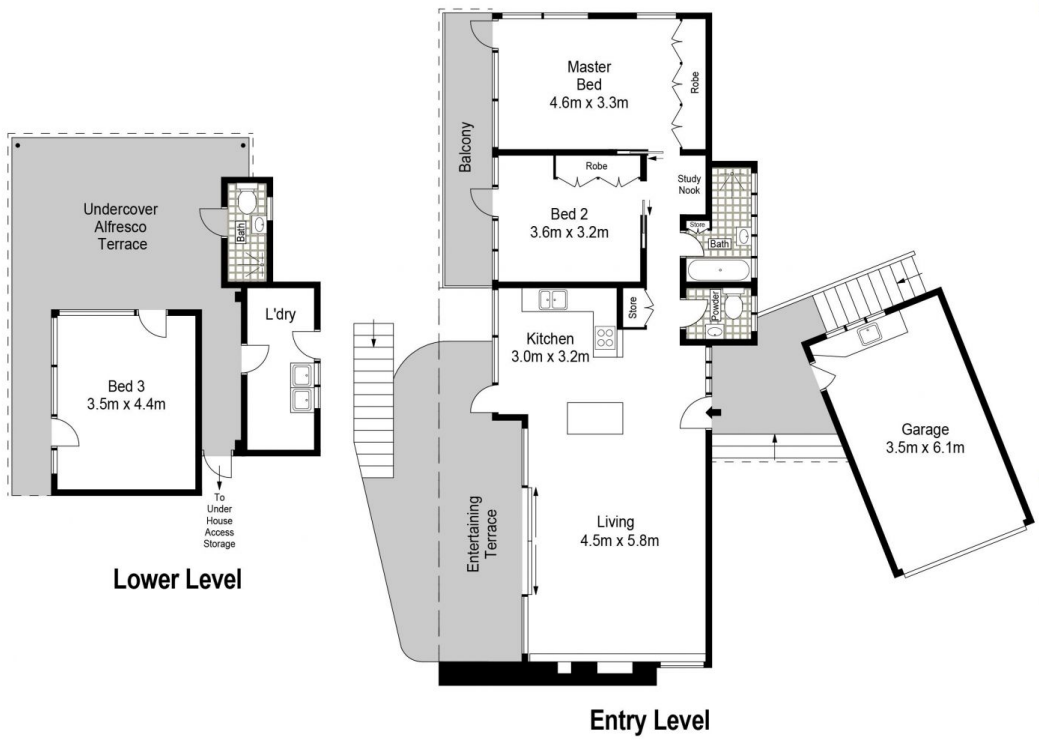
Built in 1948, "Andriess House" is one of the few remaining examples of the highly respected architect, Arthur Baldwinson. Known as the "Artists Architect" he designed homes for Dupain, Dobell, Drysdale & Kingsford Smith. This extremely rare offering is an immaculate example of early mid-century design, embracing the essential elements of simplicity and modernism with large areas of floor to ceiling glass, taking full advantage of the northern sun and blissfully private gardens. Beautifully maintained, the house is set well back from the street and sits perfectly on the generous block of approx. 1,114sqm, appearing as a floating form merging into the sub-tropical landscape.

Land Size : 1114 sqm
View : <https://www.blakeproperty.com.au/sale/nsw/northern-beaches/mona-vale/residential/house/6763240>



Andrew Blake
02 9973 4444

- ? Easy single-level living with garage directly adjacent to the front door.
- ? Stunning original architectural features - feature



Approx. Internal Area - 132 sqm (Inc.Garage)

Whilst **BLAKE Property** have made every attempt to ensure the accuracy of the floorplan and siteplan contained here, measurements are approximate and no responsibility is taken for any error, omissions or mis-statements. This plan is for illustrative purposes only. Boundaries are approximate only and should not be relied upon. Prospective purchasers should make their own independent enquiries.

