



5 Loombah Street Bilgola Plateau NSW

4 1 2

On the tranquil side of the Peninsula, nestled on a quiet, private road with sweeping views over sparkling Pittwater and Ku-Ring-Gai National Park, there is an undeniable sense of serenity as you arrive at 5 Loombah Street.

The vibe here is refreshingly non-suburban; a protected valley teeming with bird life, majestic spotted gums, natural bushland and the echoes of life on the waterways below. So relaxing, it's hard to believe you are just 38km from the CBD and only minutes from the bustling hubs of both Newport and Avalon Beach.

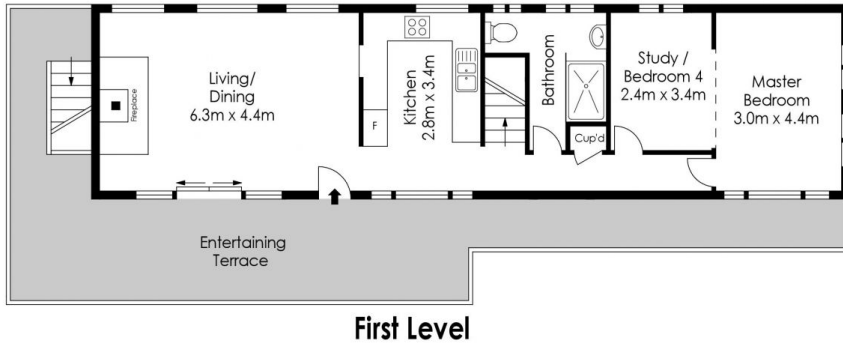
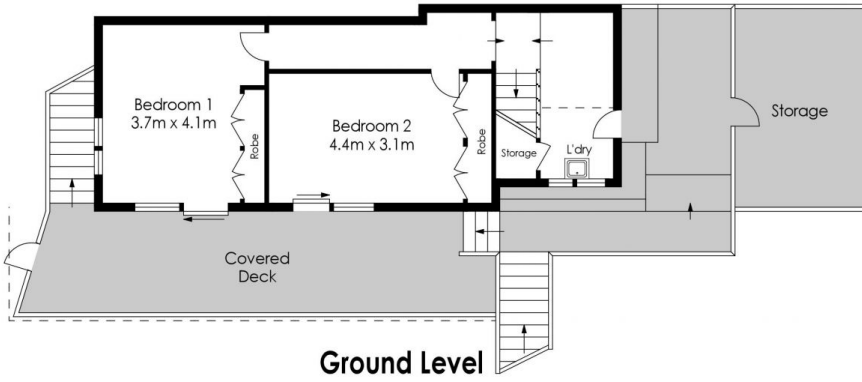
? Freshly painted throughout, well maintained and ready to enjoy

? Super spacious, sunny, outdoor entertaining decks with stunning views over Pittwater. Abundant sunshine and sublime sunsets - imagine watching the twilight yacht race

Price : \$ 2,500,000
Land Size : 876 sqm
View : <https://www.blakeproperty.com.au/sale/nsw/northern-beaches/bilgola-plateau/residential/house/6719294>



Andrew Blake
02 9973 4444



Approx. Internal Area - 136 sqm

Whilst **BLAKE Property** have made every attempt to ensure the accuracy of the floorplan and siteplan contained here, measurements are approximate and no responsibility is taken for any error, omissions or mis-statements. This plan is for illustrative purposes only. Boundaries are approximate only and should not be relied upon. Prospective purchasers should make their own independent enquiries.



5 Lombah Street BILGOLA PLATEAU

