



11/50 Parkland Road Mona Vale NSW

3 2 2

'Solita Green' boutique apartments are exclusively located adjacent to the Bayview Golf Course, enjoying a full north aspect overlooking the greens PLUS blissful privacy (views/aspect/privacy - take note, that's the 3 big "must haves" already ticked off) but there is so much about this spacious 3 bedroom apartment that leaves a lasting impression.

There's the coveted top floor position with a lift to the secure carpark. Then stepping over the threshold, there is a sense of peaceful calm, it feels insulated from the outside world, deeply comfortable and beautifully presented with contemporary high quality.

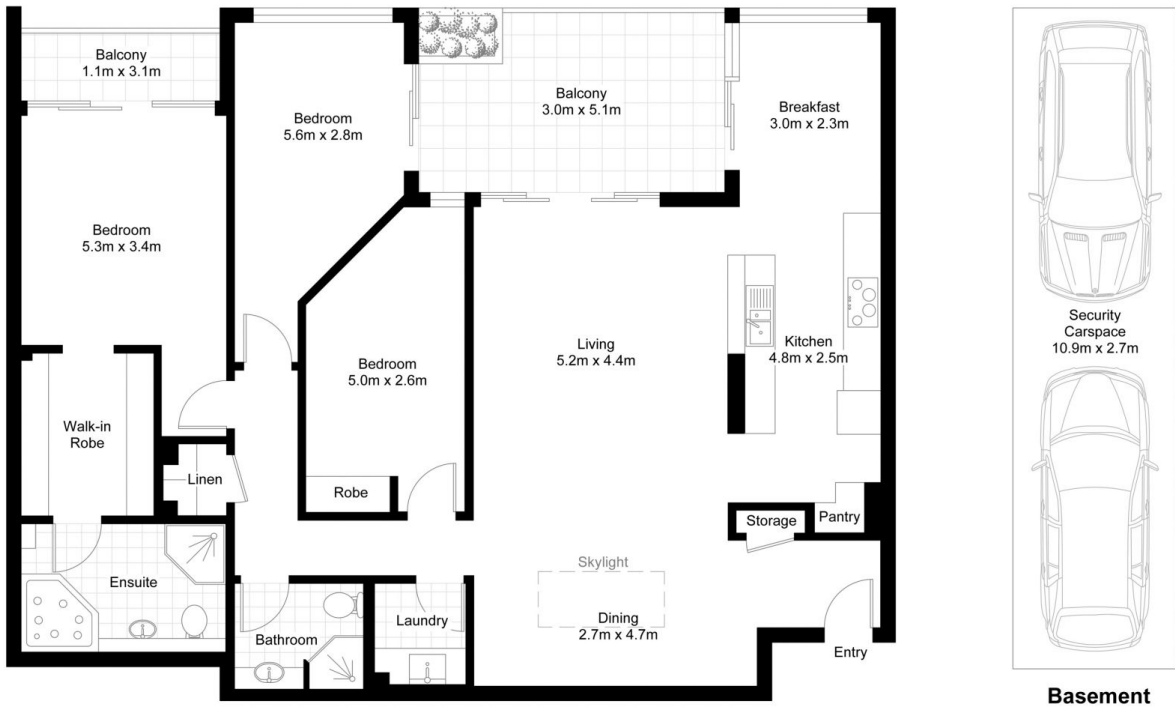
? The vast open plan living and kitchen areas are linked by an expansive, undercover outdoor entertaining terrace to the 3 bedroom wing. The layout is clever, practical and

Price : \$ 1,520,000

View : <https://www.blakeproperty.com.au/sale/nsw/north-ern-beaches/mona-vale/residential/apartment/5746043>



Andrew Blake
02 9973 4444



Approx. Internal Area: 130m²
 Approx. Balconies Area: 19m²

We have made every attempt to ensure the accuracy of the floor plan contained here, measurements are approximate and no responsibility is taken for any error, omission, or mis-statement. This plan is for illustrative purposes only. Boundaries are approximate only and should not be relied upon.



11/50 Parkland Road, Mona Vale

