



1168 Barrenjoey Road Palm Beach NSW

3 1

Deceased Estate - An Affordable Palm Beach Original !
Built way back when the very best positions on the Northern Beaches were up for grabs, the original purchasers of this block definitely chose well. Once on the terrace of this modest 3 bedroom cottage it's impossible not to smile -

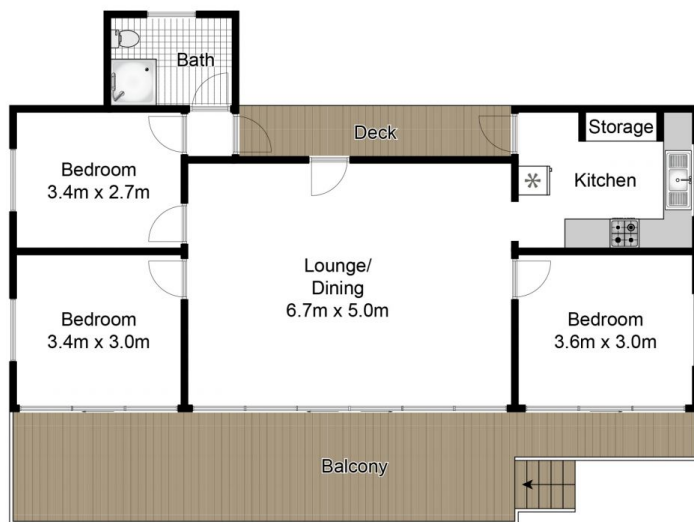
the awe-inspiring, panoramic views are really that magnificent and take your breath away! This must be one of the closest views of Lion Island and Palm Beach Lighthouse available. Take in the coveted due northerly aspect, never to be built out world class views and all day sunshine. The foreground is picture perfect, distinctly Hawaiian-like with its swaying palms, tropical flowers and the lush green golf course (can somebody bring me a deck chair and a drink with an umbrella in it?). The possibility of actually being able to afford such a remarkable position is just as exciting as the view.

Land Size : 919 sqm

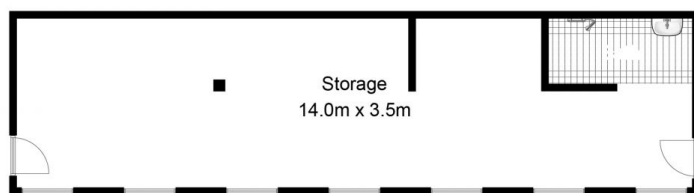
View : <https://www.blakeproperty.com.au/sale/nsw/northern-beaches/palm-beach/residential/ho-use/5745996>



Andrew Blake
02 9973 4444



Upper Level



Lower Level



Site Plan

Approx House Area: 137m²

Approx Land Area: 919m²

Whilst bwrn.com.au has made every attempt to ensure the accuracy of the floor plan contained here, measurements are approximate and no responsibility is taken for any error, omission, or mis-statement. This plan is for illustrative purposes only.

1168 Barrenjoey Road, Palm Beach

