



### 8 Stromboli Place Bilgola Plateau NSW

4 3 2

Tucked away in a quiet cul de sac, bordering a valley of natural bushland, 8 Stromboli Place, is gifted with the most spectacular position to transport you away from 'metropolis madness'. With sweeping views over Pittwater and Ku-Ring-Gai National Park, the regular sunset extravaganzas remind you of your good fortune to live in such a picturesque part of the Northern Beaches. Only a 10 minute drive from the hubs of Avalon and Newport, but a hundred miles from care.

On arrival, there is generous double parking and a short, stone-flagged pathway leading to this immaculate sandstock home. It's very nicely done, it has a beach vibe with stylish fully renovated bathrooms and kitchen. Funky original features include raked ceilings, vertical painted timber panelling, warm exposed brick feature walls and limewashed floors, providing a beautifully enhanced coastal

**Land Size** : 980 sqm

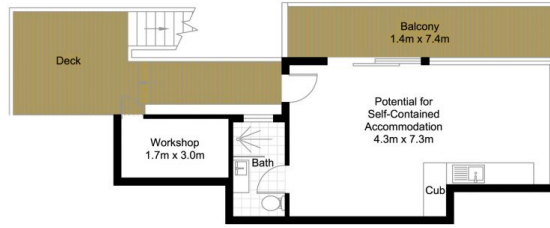
**View** : <https://www.blakeproperty.com.au/sale/nsw/northern-beaches/bilgola-plateau/residential/house/5745926>



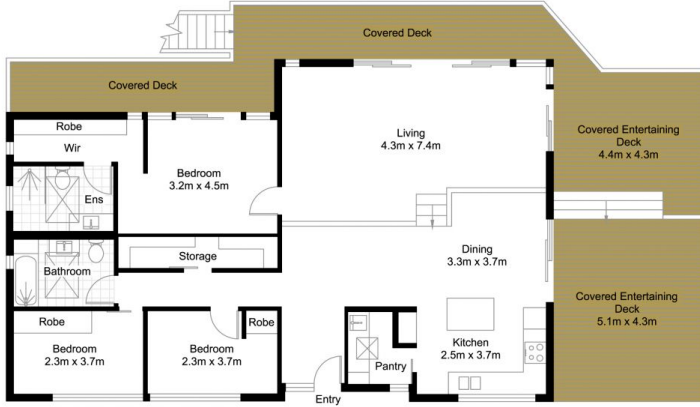
**Andrew Blake**  
02 9973 4444



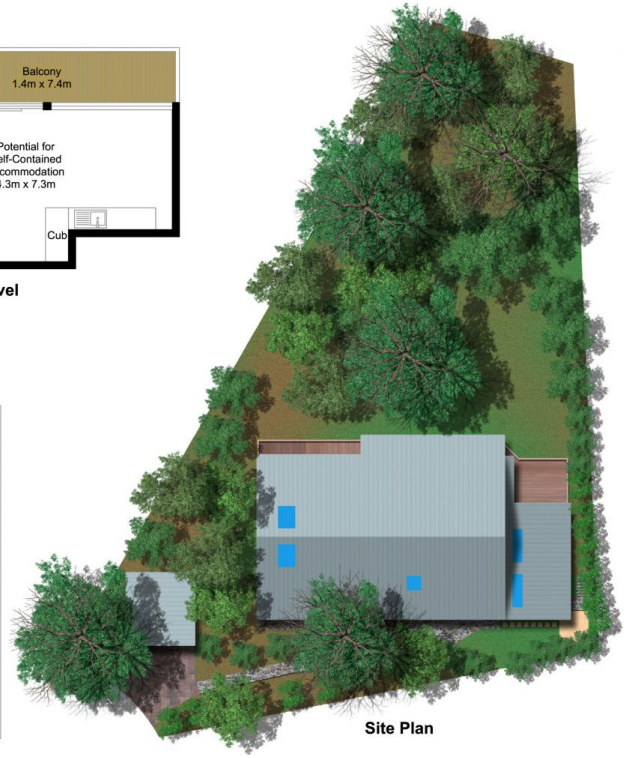
At the Front



Lower Level



Ground Level



Site Plan

**Approx. Internal Area: 164m<sup>2</sup>**

We have made every attempt to ensure the accuracy of the floor plan contained here, measurements are approximate and no responsibility is taken for any error, omission, or mis-statement. This plan is for illustrative purposes only.



**8 Stromboli Place, Bilgola Plateau**

