



16 Ruskin Rowe Avalon Beach NSW

5 2 2

A remarkable home set on approx 3200sqm within prestigious Ruskin Rowe. Historically defined by its gracious estate properties, where parklike lawns and landscaped gardens showcase some of Avalon's most beautiful homes. At the end of the long driveway, past the antique fountain and pony corral, rests a truly graceful home. Leura-like with soft grey weatherboard, sandstone paving, white fretwork framed by majestic conifers. Beyond the traditional façade you will find all the expected comforts of a contemporary home.

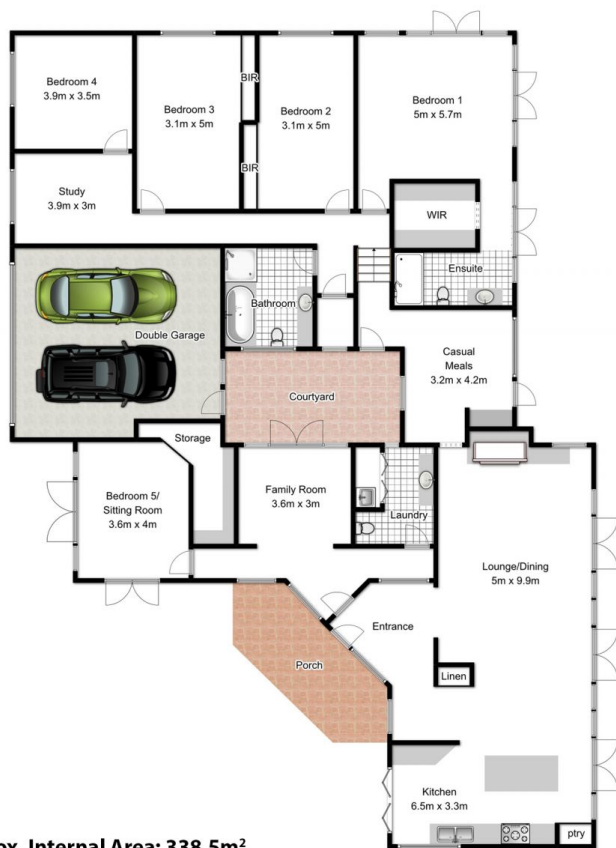
Features of the main living level:

- Stone-paved entrance portico offering an inviting place to sit and admire your expansive rolling lawns and gardens.
- Guest wing with bedroom, living, powder room / laundry & ample storage.
- Contemporary kitchen with marble island bench,

View : <https://www.blakeproperty.com.au/sale/nsw/north-ern-beaches/avalon-beach/residential/house/5745899>

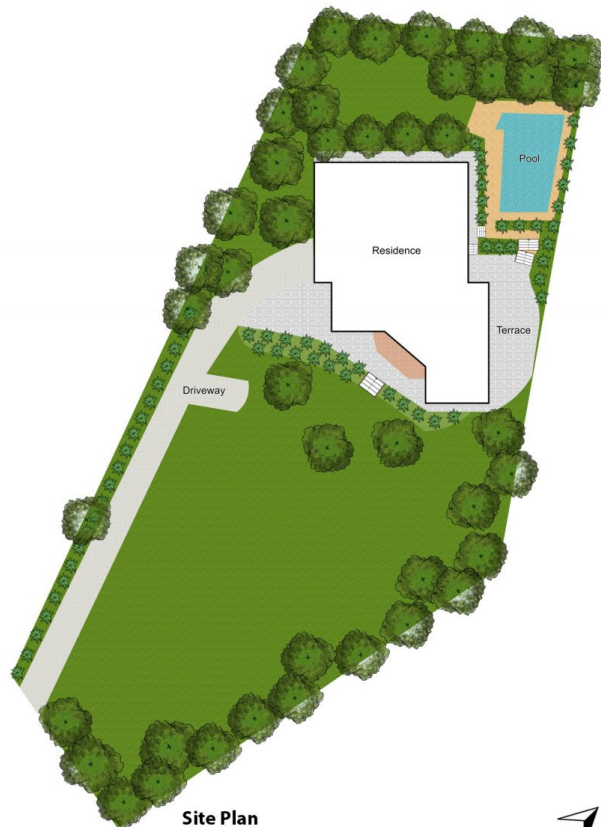


Andrew Blake
02 9973 4444



Approx. Internal Area: 338.5m²

Whilst bwrn.com.au has made every attempt to ensure the accuracy of the floor plan contained here, measurements are approximate and no responsibility is taken for any error, omission, or mis-statement. This plan is for illustrative purposes only.



Site Plan



16 Ruskin Rowe, Avalon Beach

