



### 353 Lower Plateau Road Bilgola Plateau NSW

4 2 1

Hello view! This oldie but a goodie, is offered for sale for the first time ever! Built in 1963 and in original condition throughout, this much loved home has been owned by the same family since it was built. Located in a family friendly neighbourhood and set amid spacious lawns and gardens on an approx. 696sqm block. Offering beautiful Pittwater views, it is brimming with loads of potential to redesign or rebuild. The character home's open plan design offers loads of appeal, with separate lounge and dining zones and a casual sunroom offering wonderful Pittwater views. The sought after northerly aspect guarantees all day sunshine and coastal breezes.

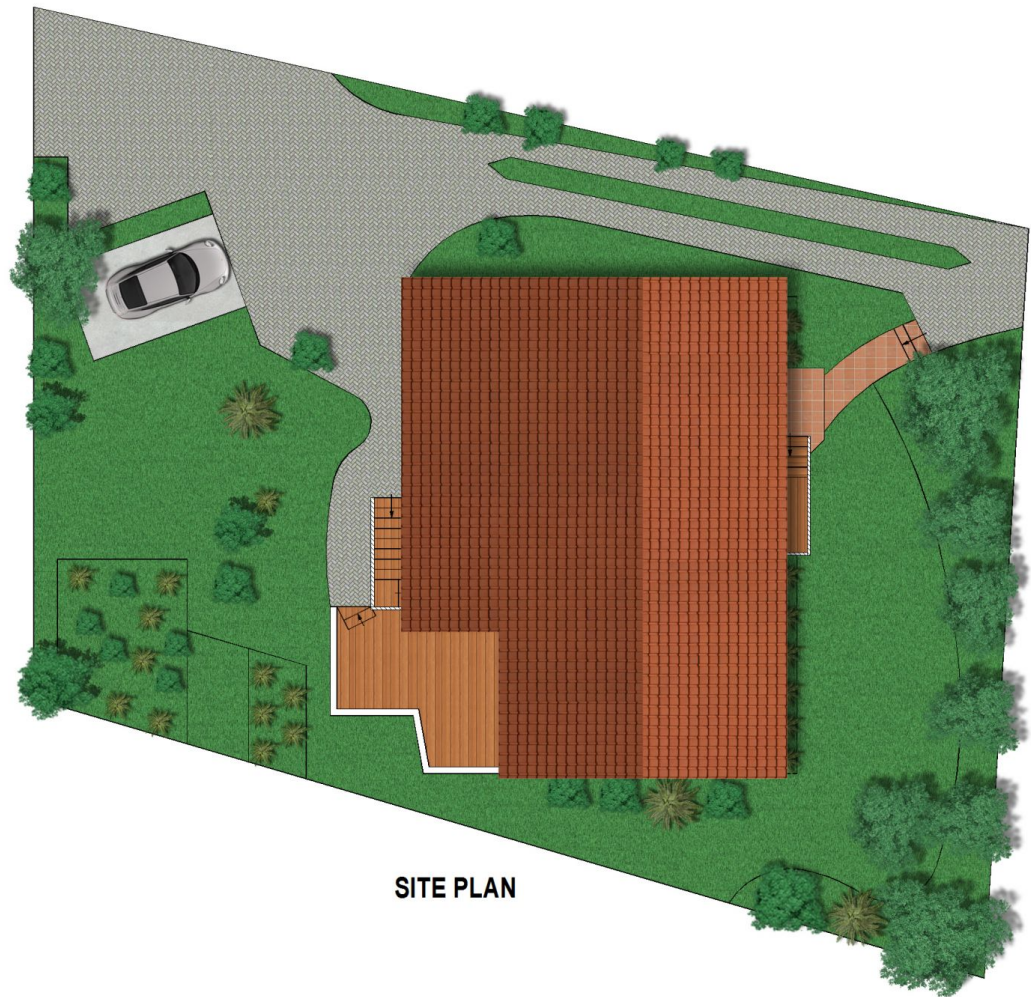
A versatile introduction to family life in a fabulous location, the property is set within the sought after Bilgola Plateau Public School catchment area with a local bus stop at your door. Just a short drive from village shops and cafes,

**View :** <https://www.blakeproperty.com.au/sale/nsw/north-ern-beaches/bilgola-plateau/residential/house/5745897>

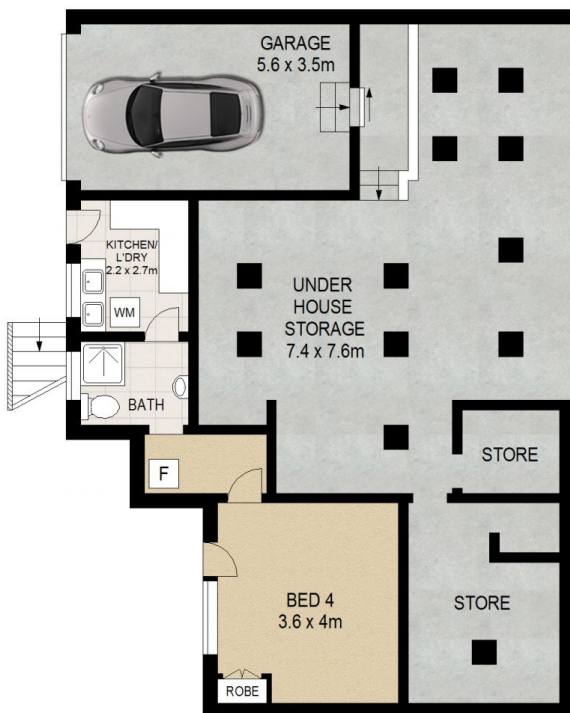


**Andrew Blake**  
02 9973 4444





**SITE PLAN**



**LOWER GROUND LEVEL**



**ENTRANCE LEVEL**

## 353 Lower Plateau Road, Bilgola Plateau

Scale in metres. Indicative only. Dimensions are approximate. All information contained herein is gathered from sources we believe to be reliable. However we cannot guarantee its accuracy and interested persons should rely on their own enquiries.

