



36 Daly Street Bilgola Plateau NSW

5 3 5

set across a generous expanse of beautifully landscaped gardens and lawns, this inviting family home enjoys a very private position bordering the 'crown of newport reserve'. perfectly designed to meet the needs of today's busy family lifestyle, it's thoughtfully planned, with a terrific parents' retreat on the main floor and additional bedrooms on the upper level. adding further appeal is the five minute walk for the kids to the sought after and ever so popular bilgola plateau public school.

inside, you'll find a fluid floorplan with separate living and dining areas, each flowing to a deep wraparound deck; a gas equipped kitchen which offers views across the sweep of the lush gardens and alfresco dining terrace. the expansive master suite enjoys all day sunshine and features a separate seating area, huge walk-in wardrobe, double vanity ensuite and deck. upstairs, there is a second

View : <https://www.blakeproperty.com.au/sale/nsw/north-ern-beaches/bilgola-plateau/residential/house/5745821>



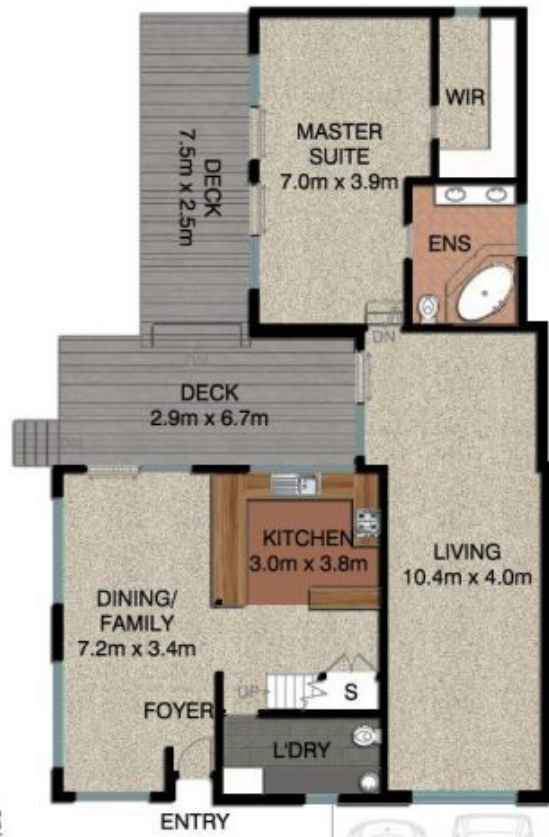
Andrew Blake
02 9973 4444



SITE PLAN



LOWER FLOOR



GROUND FLOOR



FIRST FLOOR

BILGOLA PLATEAU 36 DALY STREET

*INTERNAL FLOOR AREA APPROX 326m²
INCLUDES GARAGE, STORES AND DECKS



*PLANS SHOWN ONLY INDICATIVE OF LAYOUT. DIMENSIONS ARE APPROXIMATE.

Floor plan supplied by V-Mark Design Pty Ltd. This floor plan is provided for indicative purposes only. Measurements are approximate and not to scale. The vendor, agency and supplier will accept no liability for its accuracy. Interested parties are advised to make their own independent enquiries.