



9 Hansford Parade Bilgola NSW

4 4 2

from the moment you walk through the bespoke double entry doors, across stunning travertine floors to the 180 degree unobstructed panoramic views of pittwater and the national park beyond, you begin to appreciate the rare and unique quality and attention to detail that this magnificent home exudes.

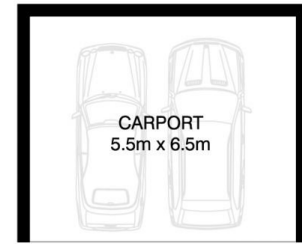
high ceilings enhance the design features throughout, from the indulgent master bedroom suite with its own private deck, outside shower and grand full sized dressing room, to the open plan living areas, with jetmaster wood fireplace and the spacious designer 'hamptons style' kitchen with a brand new commercial style oven most chefs would envy.

the elegant yet relaxed style of this beautiful home is seamlessly authentic, feeling very much like a private resort that has maximised the generous parcel of land, with

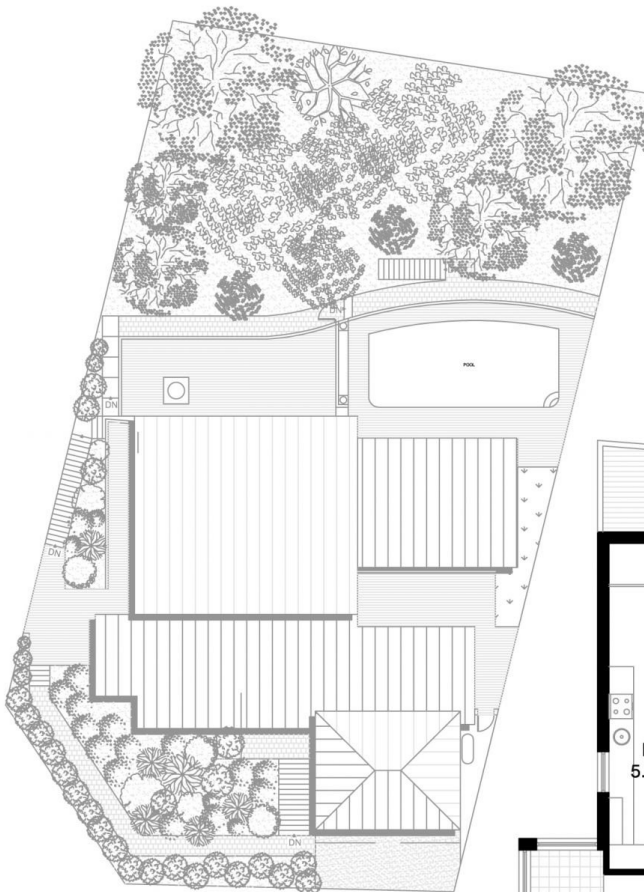
View : <https://www.blakeproperty.com.au/sale/nsw/north-ern-beaches/bilgola/residential/house/5745794>



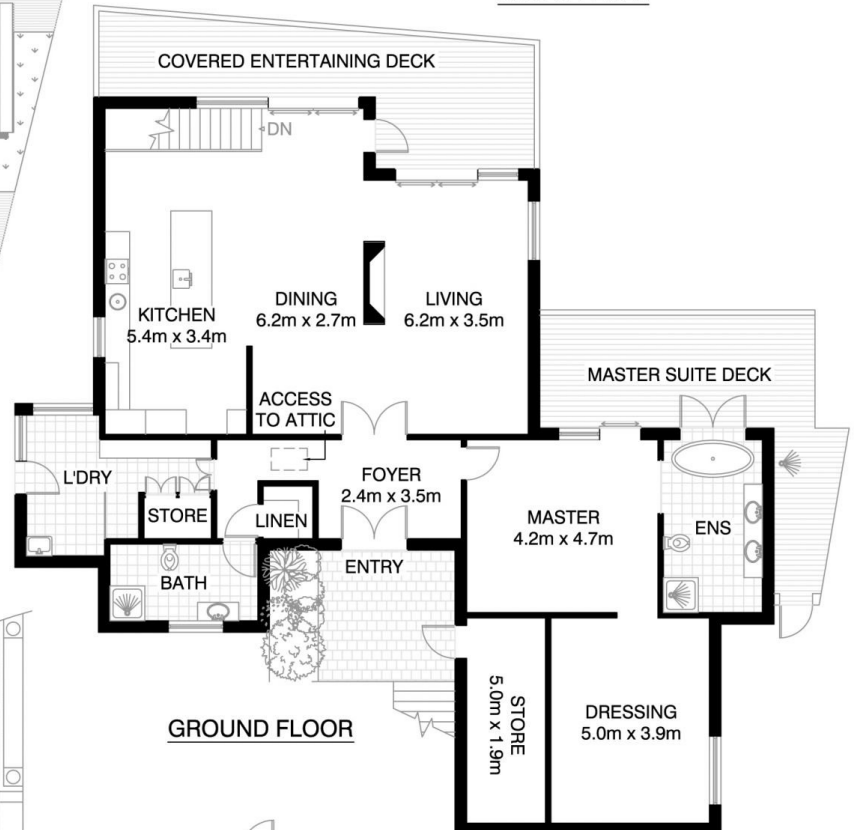
Andrew Blake
02 9973 4444



ENTRY LEVEL



SITE PLAN



GROUND FLOOR



(NOT ACTUAL LOCATION)



LOWER GROUND FLOOR



SCALE (METRES)

BILGOLA

9 HANSFORD PARADE

*INTERNAL FLOOR AREA APPROX 275m²



*PLANS SHOWN ONLY INDICATIVE OF LAYOUT. DIMENSIONS ARE APPROXIMATE.

Floor plan supplied by V-Mark Design Pty Ltd. This floor plan is provided for indicative purposes only. Measurements are approximate and not to scale. The vendor, agency and supplier will accept no liability for its accuracy. Interested parties are advised to make their own independent enquiries.