



5 Capri Close Avalon NSW

4 🛏 2 🚿 2 🚗

privately nestled within a cul de sac setting with tranquil views across the beautiful expanse of pittwater is a contemporary home of impressive dimensions and superb quality.

View : <https://www.blakeproperty.com.au/sale/nsw/north-ern-beaches/avalon/residential/house/5745785>

designed to take full advantage of its dramatic coastal position, it features deep wrap around verandahs across both levels, erasing the boundaries between indoors and out, while creating a relaxed yet elegant environment for family living and year round entertaining.



Andrew Blake
02 9973 4444

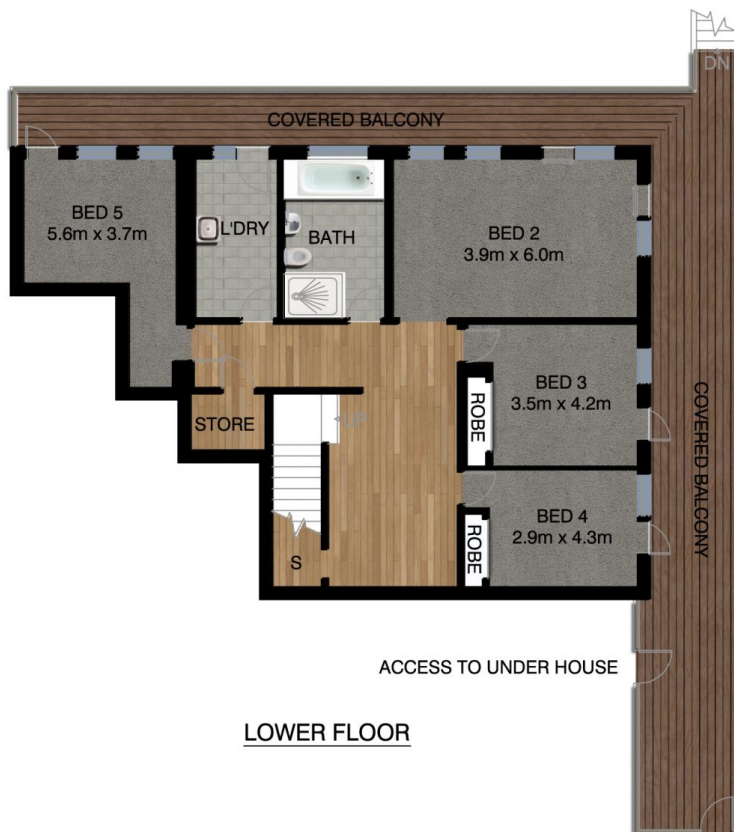
its open plan design is made more expansive by cathedral ceilings, gorgeous blackbutt flooring and a fabulous choice of lounges plus a study on the main floor; the sparkling kitchen has been recently renovated and features a caesarstone island, bosch appliances and loads of storage space.

AVALON 5 CAPRI CLOSE

*INTERNAL FLOOR AREA APPROX 492m²



SITE PLAN



*PLANS SHOWN ONLY INDICATIVE OF LAYOUT. DIMENSIONS ARE APPROXIMATE.

Floor plan supplied by V-Mark Design Pty Ltd. This floor plan is provided for indicative purposes only. Measurements are approximate and not to scale. The vendor, agency and supplier will accept no liability for its accuracy. Interested parties are advised to make their own independent enquiries.