



### 30 Birubi Crescent Bilgola Plateau NSW

5 4 2

There is much to love about this home that it lingers with you long after you leave. The flawless styling throughout is an organic layering of white with light timber, showcasing the outdoors as an ever changing backdrop. Beyond the inspiring presentation is the master-built construction, insulating each level in a cloak of quiet. Almost every room in the house enjoys a private view over peaceful Pittwater embraced with a canopy of trees and bird life - not just impressive but restorative!

#### Entrance level

? Level entrance to a double lock up automated garage with internal access to kitchen, work shop and storage plus multiple off-street parking.

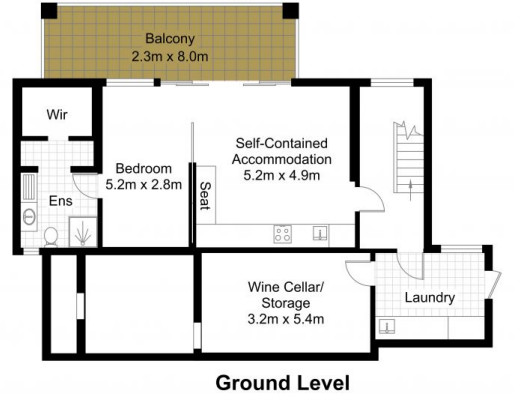
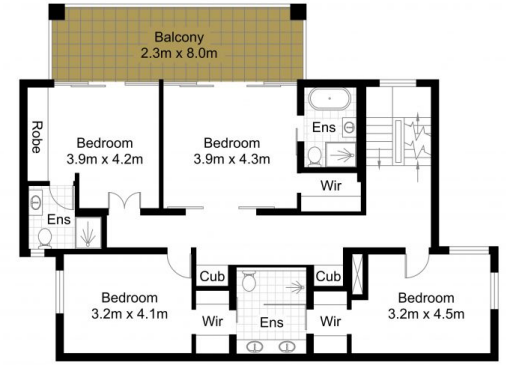
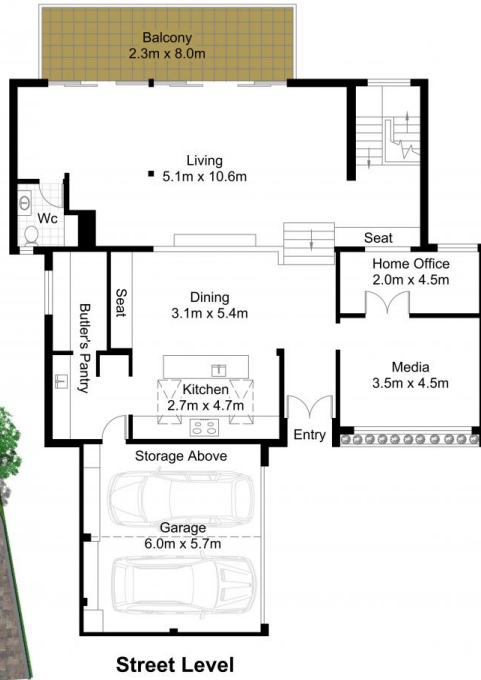
? New gourmet cook's kitchen with blackbutt shelving, induction cooktop, 2 ovens (steam feature), complete with the entertainers' dream butler's pantry! Includes additional

**Land Size** : 803 sqm

**View** : <https://www.blakeproperty.com.au/sale/nsw/northern-beaches/bilgola-plateau/residential/house/5745759>



**Andrew Blake**  
02 9973 4444



Approx. Internal Area: 390m<sup>2</sup>

We have made every attempt to ensure the accuracy of the floor plan contained here, measurements are approximate and no responsibility is taken for any error, omission, or mis-statement. This plan is for illustrative purposes only.



30 Birubi Crescent, Bilgola Plateau

