



30 Brinawa Street Mona Vale NSW

3 1 2

Remember when life was simple? Well this is the home for you! Single level living on a sunny level block, an easy stroll from Mona Vale Village. Even better, this 'neat as a pin' home is a blank canvas - original and immaculate. Perfect to either move in to as is, rent out or expand upon, in this very affordable price range.

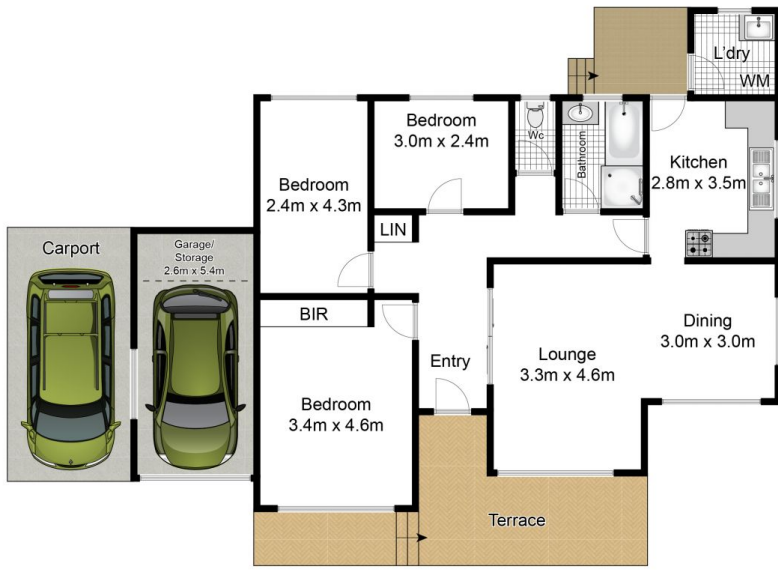
View : <https://www.blakeproperty.com.au/sale/nsw/north-ern-beaches/mona-vale/residential/house/5745756>

Key features of this great property include:-

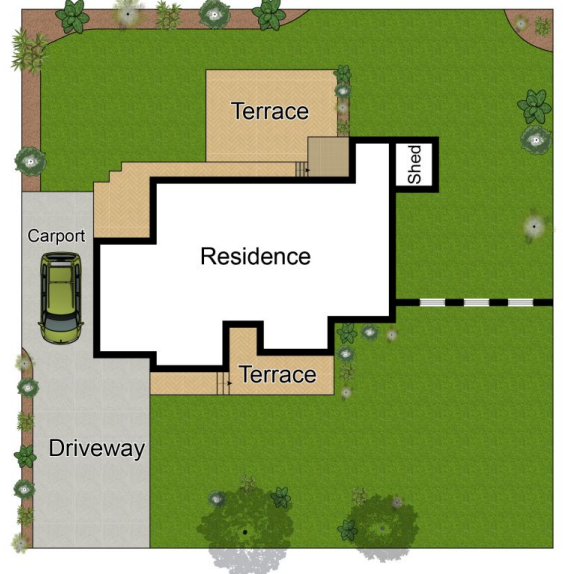
- attractive, super wide frontage
- perfectly level, sunny northrthly block in a family friendly street
- 3 bedroom, single level, original brick and tile home, situated in a quiet leafy street
- sun drenched due north aspect
- timber floors throughout



Andrew Blake
02 9973 4444



Ground Floor



Site Plan

Internal Area: 98m²
Terrace Area: 45m²
Garage Area: 15m²
Total Area: 158m²

Whilst BWRM & Blake Property has made every attempt to ensure the accuracy of the floor plan and site plan contained here, measurements are approximate and no responsibility is taken for any error, omissions or mis-statements. This plan is for illustrative purposes only. Boundaries are approximate only and should not be relied upon.



30 Brinawa Street, Mona Vale

