



72 Palmgrove Road Avalon NSW

4 3 2

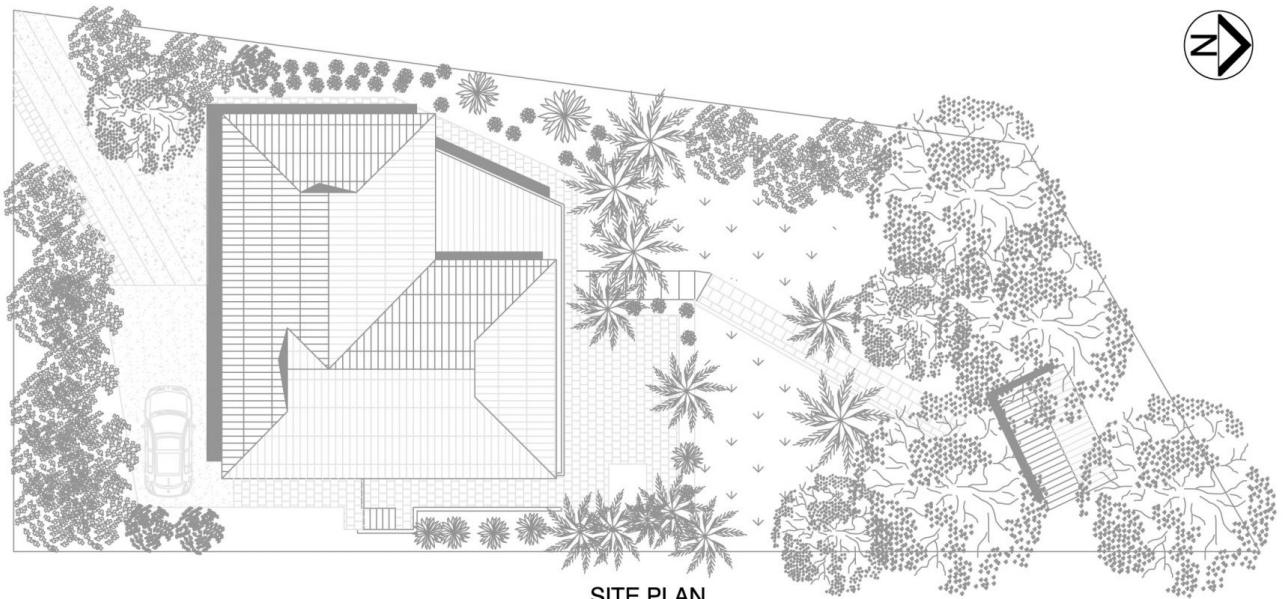
set amongst lush rainforest gardens, this tranquil balinese inspired home provides endless options for light-filled indoor/outdoor living and entertaining. immaculately presented it is just moments from the bushland beauty and bushwalks of angophora reserve, it's an easy walk to avalon's village shops, cafes and restaurants, local beaches and schools.

filled with daylong sunshine and enjoying a private leafy outlook from every room, it's the perfect place to relax. the expansive open plan lounge and dining room features polished timber floors and walls of glass windows and doors, framing the lush greenery of the tropical gardens. the expansive entertaining deck enjoys a perfect northerly aspect providing a sunny spot to relax with friends and family and dine alfresco under the covered deck.

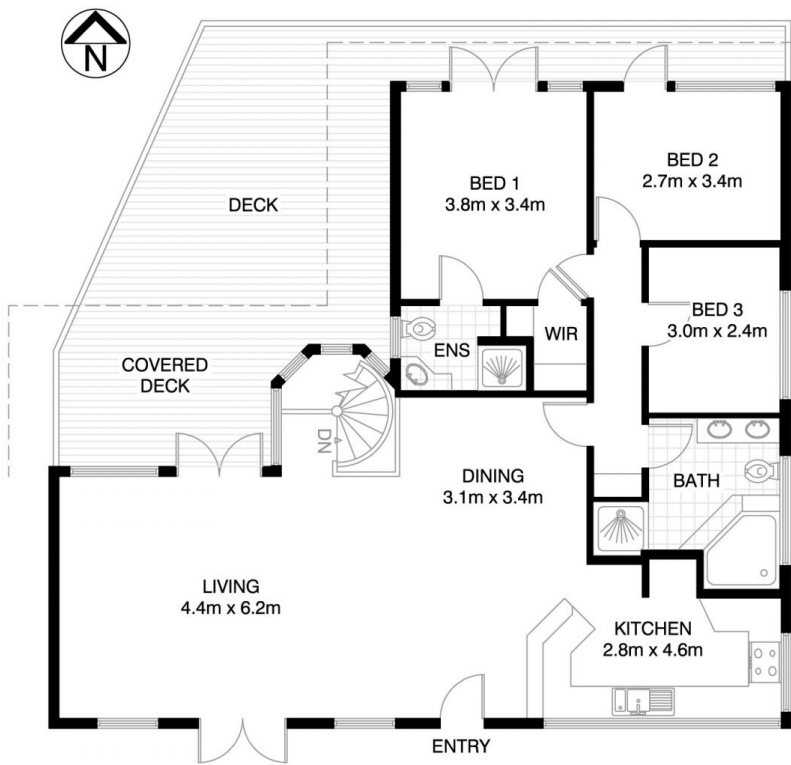
View : <https://www.blakeproperty.com.au/lease/nsw/north-hern-beaches/avalon/residential/house/5745706>



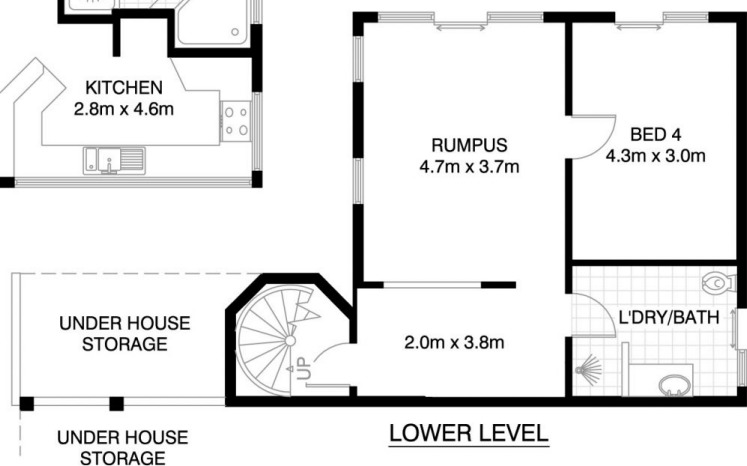
Melinda Blake
02 9973 4444



SITE PLAN



GROUND FLOOR



LOWER LEVEL



*PLANS SHOWN ONLY INDICATIVE OF LAYOUT. DIMENSIONS ARE APPROXIMATE.

Floor plan supplied by V-Mark Design Pty Ltd. This floor plan is provided for indicative purposes only. Measurements are approximate and not to scale. The vendor, agency and supplier will accept no liability for its accuracy. Interested parties are advised to make their own independent enquiries.

AVALON
72 PALMGROVE ROAD
 *INTERNAL FLOOR AREA APPROX 162m²