



287 Lower Plateau Road Bilgola Plateau NSW

4 2 2

nestled in one of bilgola's most peaceful and serene locations with a stunning backdrop of pittwater, this charming family home boasts flexibility amid tranquillity. lovingly cared for, this peaceful home is located within the sought after bilgola public school catchment.

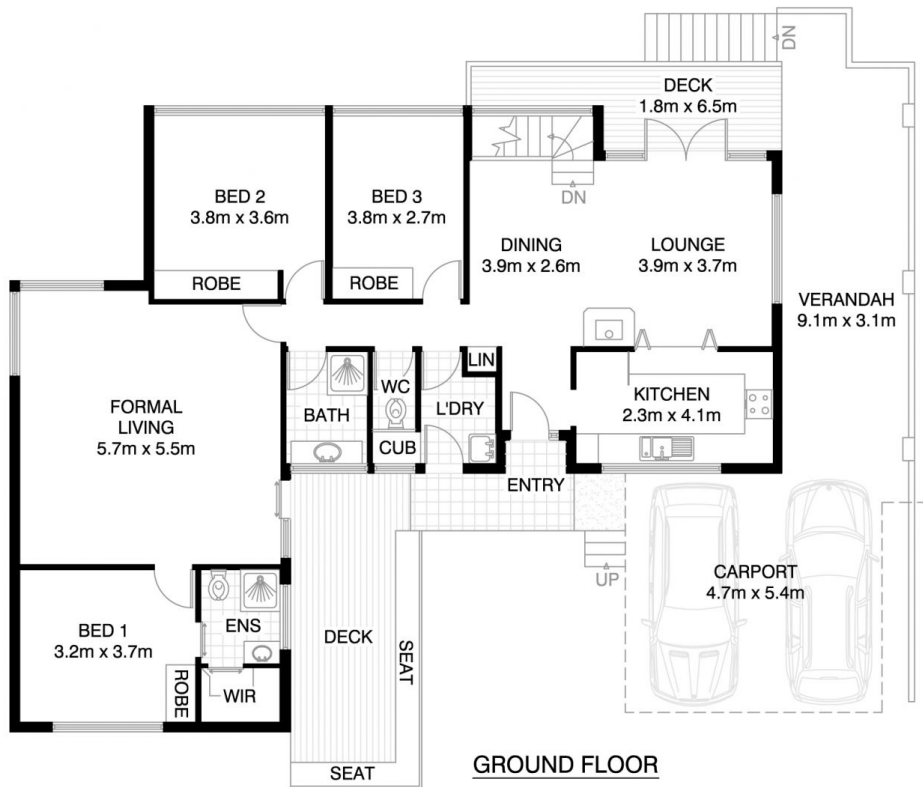
View : <https://www.blakeproperty.com.au/sale/nsw/north-ern-beaches/bilgola-plateau/residential/house/5745692>

featuring a delightful abundance of indoor and outdoor entertaining areas designed to capture the breezes and crystal waters of pittwater, it offers a spacious open plan living and dining area that flows onto an alfresco entertaining area, bathed in sunlight, that offers picturesque district and water views that provide a delightfully relaxing ambience from all living spaces.

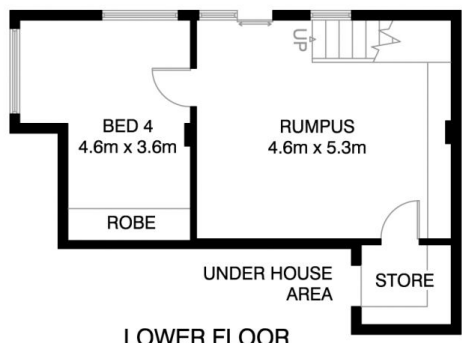


Andrew Blake
02 9973 4444

the private master bedroom features and ensuite with built in walk in robe whilst the three other bedrooms, all with built in robes, provide beautiful leafy views.

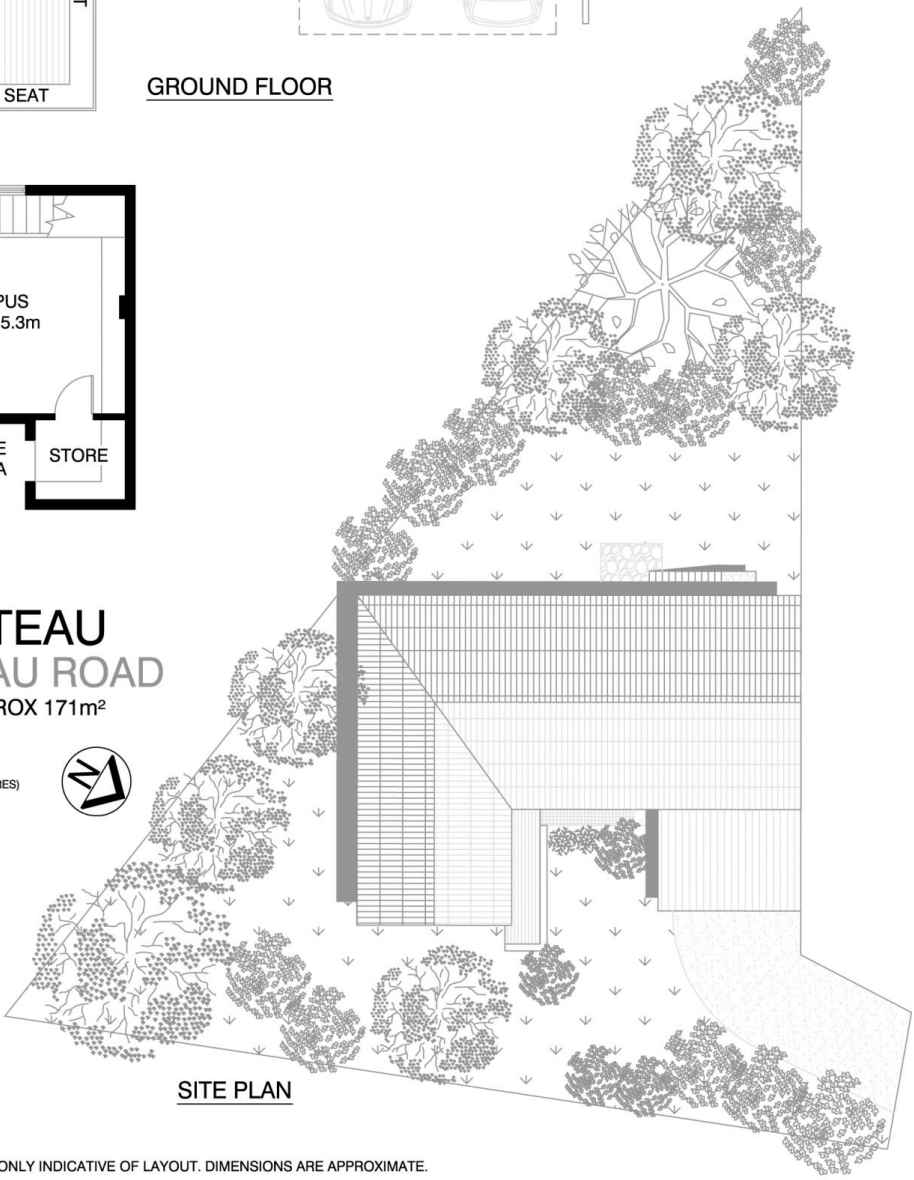
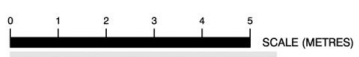


GROUND FLOOR



LOWER FLOOR

BILGOLA PLATEAU
287 LOWER PLATEAU ROAD
 *INTERNAL FLOOR AREA APPROX 171m²



SITE PLAN



*PLANS SHOWN ONLY INDICATIVE OF LAYOUT. DIMENSIONS ARE APPROXIMATE.
 Floor plan supplied by V-Mark Design Pty Ltd. This floor plan is provided for indicative purposes only. Measurements are approximate and not to scale. The vendor, agency and supplier will accept no liability for its accuracy. Interested parties are advised to make their own independent enquiries.