



### 23 York Terrace Bilgola NSW

5 3 3

sized to accommodate the growing family in absolute comfort and privacy, this renovated, sun soaked residence presents as an idyllic family home. wrapped in lush tropical gardens, it's perfectly poised to capture views of the brilliant blue sweep of the Pacific Ocean. designed for the ultimate in relaxed indoor/outdoor entertaining, the layout encompasses multiple living areas and a versatile array of alfresco spaces.

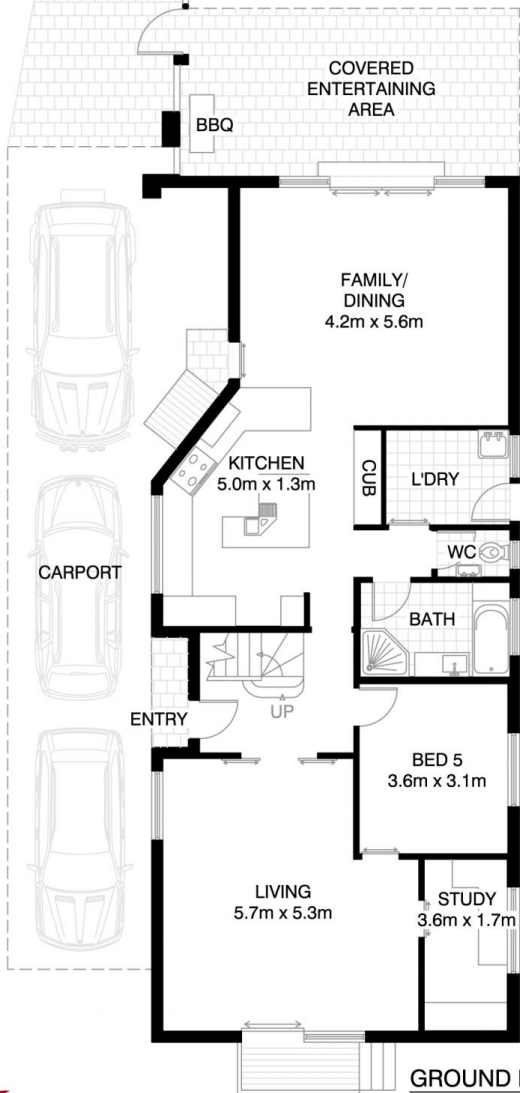
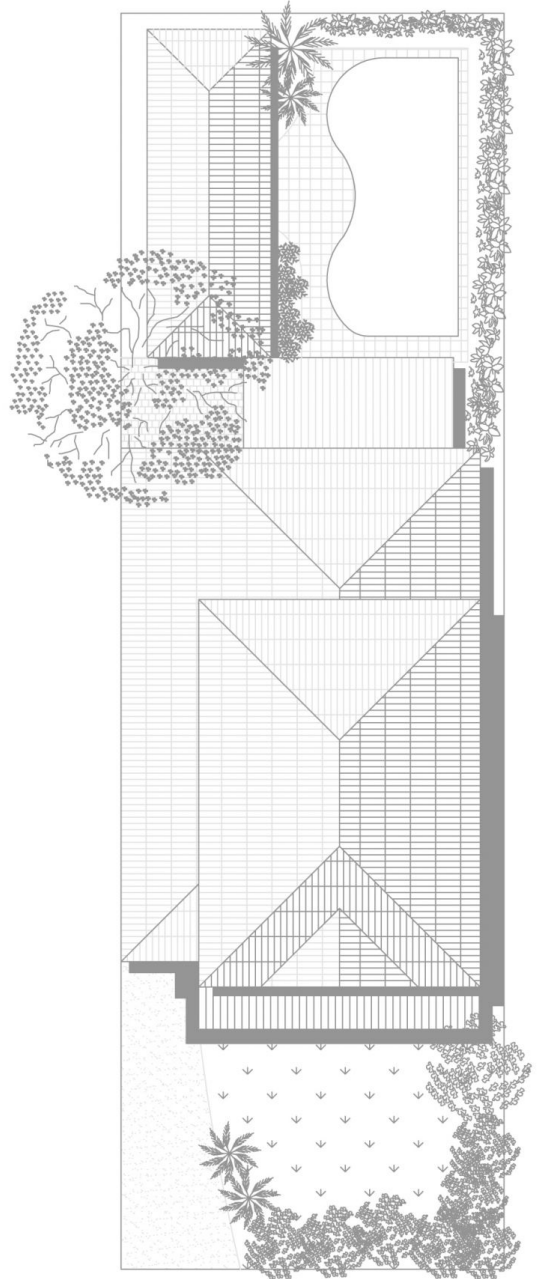
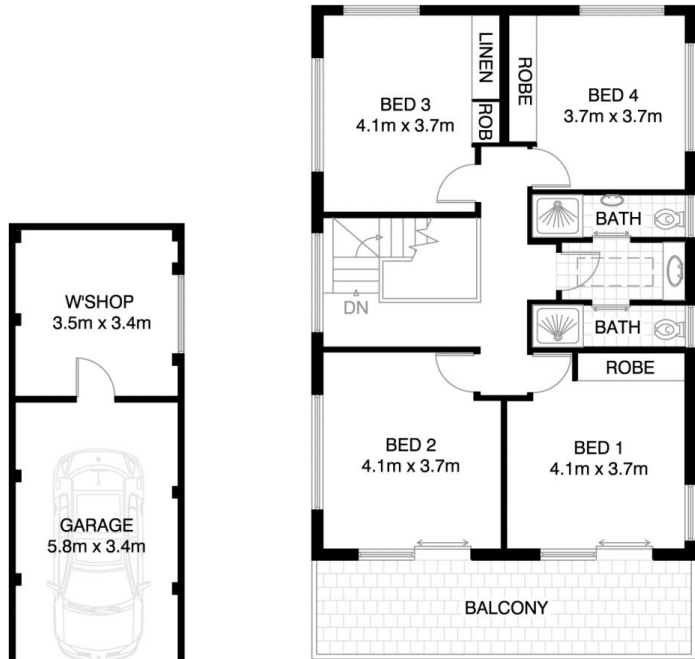
nestled in a tree-lined, family-friendly street in the Bilgola Plateau Public School catchment, from here you're within walking distance to the unspoiled bushland, waterfalls and walking tracks of the Crown of Newport Reserve. the Plateau's village shops and cafes are walking distance away, while the stunning nearby beaches of Bilgola and Newport make a tantalising prospect for summer.

**View :** <https://www.blakeproperty.com.au/sale/nsw/north-ern-beaches/bilgola/residential/house/5745663>



**Andrew Blake**  
02 9973 4444





# BILGOLA PLATEAU 23 YORK TERRACE

\*INTERNAL FLOOR AREA APPROX 201m<sup>2</sup>



\*PLANS SHOWN ONLY INDICATIVE OF LAYOUT. DIMENSIONS ARE APPROXIMATE.

Floor plan supplied by V-Mark Design Pty Ltd. This floor plan is provided for indicative purposes only. Measurements are approximate and not to scale. The vendor, agency and supplier will accept no liability for its accuracy. Interested parties are advised to make their own independent enquiries.