



15 Loombah Street Bilgola NSW

5 2 2

entertain in glorious privacy against one of the most majestic outlooks that Pittwater has to offer. stunningly positioned, this magnificent residence is blessed with awe-inspiring views over the nearby waters of Salt Pan Cove, out into the sparkling expanse of Pittwater and the bushland of Ku-ring-gai National Park and beyond.

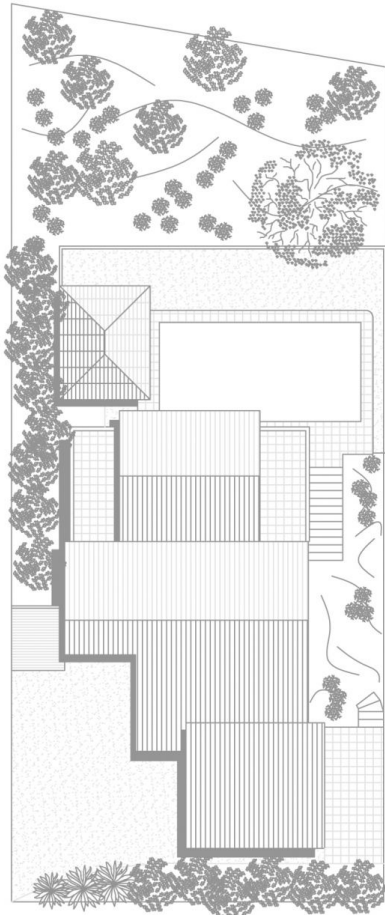
enjoying rare level access, this unique home can be configured to suit a range of lifestyles. tucked away down a private drive and surrounded by easycare gardens and native birdlife, this private sanctuary features three spectacular entertaining terraces with water views from almost every room.

immersed in the ambience of a classic coastal haven, the home features a mix of modern updates with scope to add your own creative touches down the track. the split level

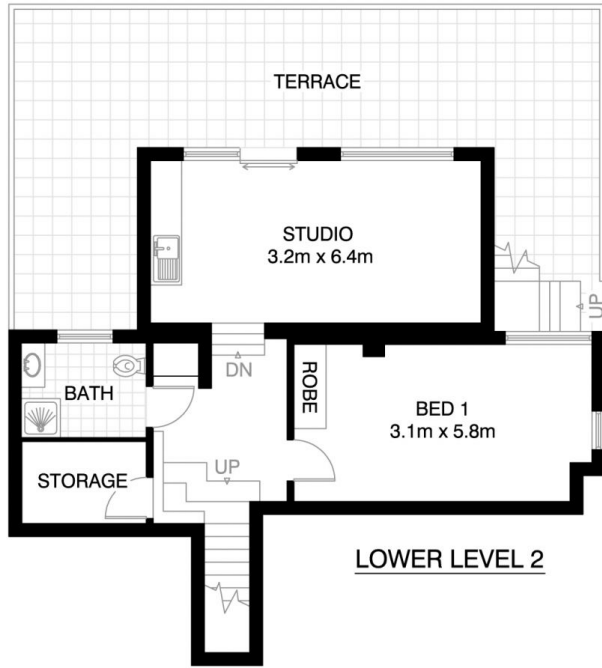
View : <https://www.blakeproperty.com.au/sale/nsw/north-ern-beaches/bilgola/residential/house/5745662>



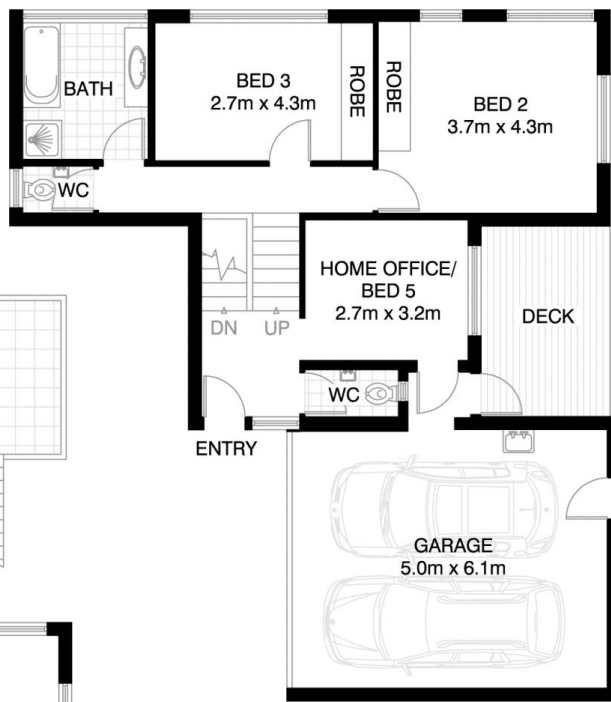
Andrew Blake
02 9973 4444



SITE PLAN



LOWER LEVEL 2

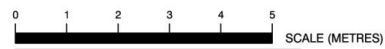


ENTRY LEVEL



LOWER LEVEL 1

BILGOLA PLATEAU
15 LOOMBAH STREET
 *INTERNAL FLOOR AREA APPROX 227m²



*PLANS SHOWN ONLY INDICATIVE OF LAYOUT. DIMENSIONS ARE APPROXIMATE.

Floor plan supplied by V-Mark Design Pty Ltd. This floor plan is provided for indicative purposes only. Measurements are approximate and not to scale. The vendor, agency and supplier will accept no liability for its accuracy. Interested parties are advised to make their own independent enquiries.