



10/82 Avalon Parade Avalon Beach NSW

2 1 1

offering outstanding value is this lovely light filled two bedroom apartment in Avalon's highly sought after Pittwater Palms retirement village. this incredibly private apartment enjoys a tranquil leafy outlook and a lovely North facing balcony.

this is arguably one of the best located apartments in the complex, situated at the north eastern end of the village and adjacent to the bowling green. incredibly convenient, this sought after home has direct level access to Avalon Bowling Club, Avalon village with all its amenities, buses and Avalon Beach.

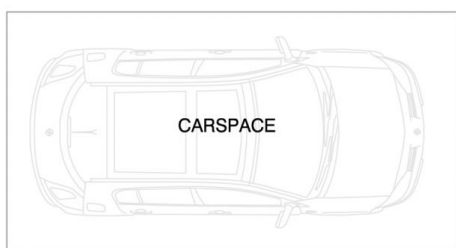
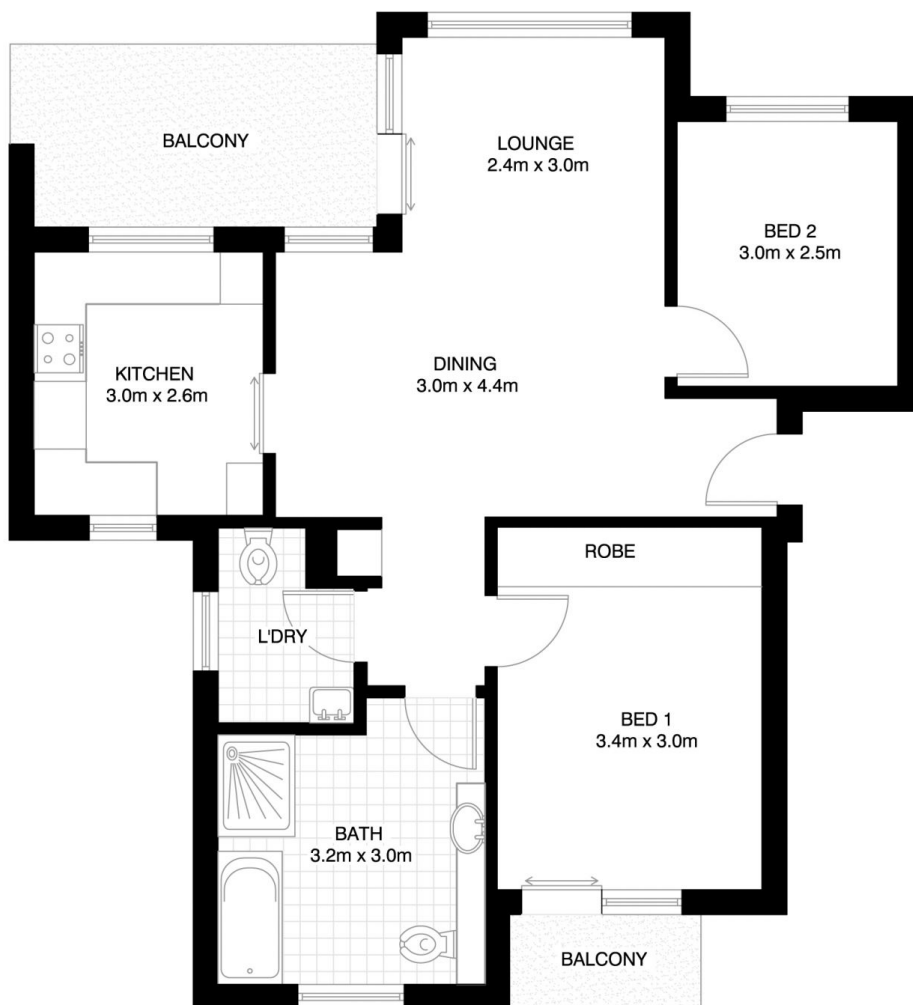
apartment highlights include:

- open plan living/dining areas flowing to north facing balcony
- spacious kitchen with dishwasher

Building Size : 85 sqm
View : <https://www.blakeproperty.com.au/sale/nsw/northern-beaches/avalon-beach/residential/apartment/5745661>



Andrew Blake
 02 9973 4444



AVALON

10/82 AVALON PARADE

*INTERNAL FLOOR AREA APPROX 80m²
inc BALCONY



*PLANS SHOWN ONLY INDICATIVE OF LAYOUT. DIMENSIONS ARE APPROXIMATE.

Floor plan supplied by V-Mark Design Pty Ltd. This floor plan is provided for indicative purposes only. Measurements are approximate and not to scale. The vendor, agency and supplier will accept no liability for its accuracy. Interested parties are advised to make their own independent enquiries.