



244 Lower Plateau Road Bilgola NSW

5 3 3

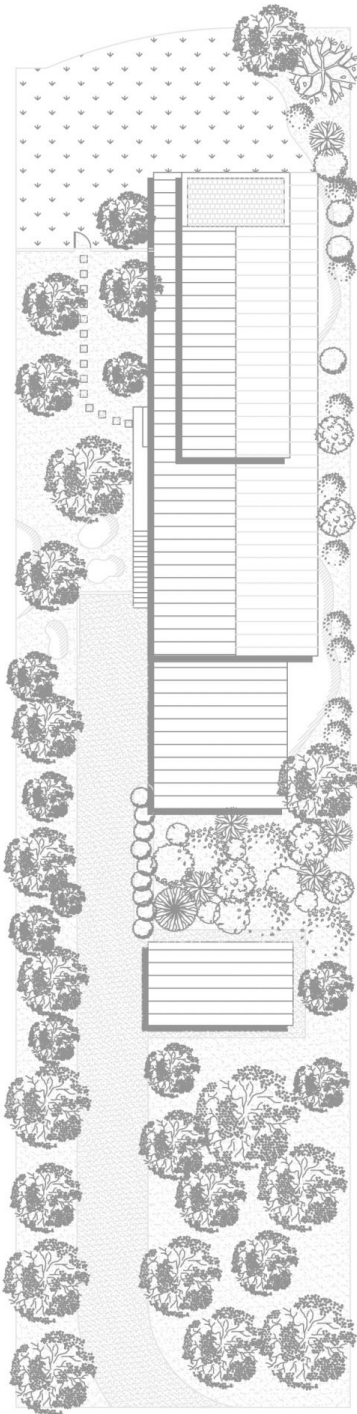
an atmosphere of absolute relaxation and tranquillity awaits the new owners of this magnificent Pittwater retreat. blessed with a perfect sundrenched North aspect and kissed by cooling coastal breezes, this stunning home captures an extraordinary outlook over a serene stretch of Pittwater and beyond. backing directly on to a bushland nature reserve, it's surrounded by greenery and offers incredible and unsurpassed privacy that is rarely found.

awash with contemporary style, the interiors showcase subtle touches of coastal chic with a fresh, neutral colour palette, clean lines and warm timber finishes. the open plan family room and kitchen are bathed in streaming northerly sunlight and spill out to an expansive outdoor terrace. entertaining here will guarantee an inspiring backdrop at any time of the day or year - from dramatic evening sunsets to Pittwater's colourful yacht races.

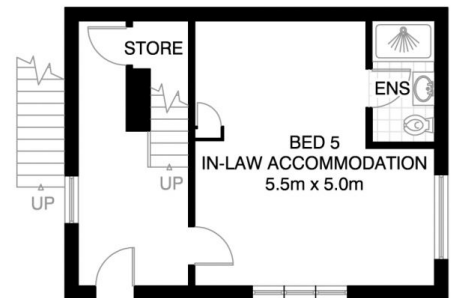
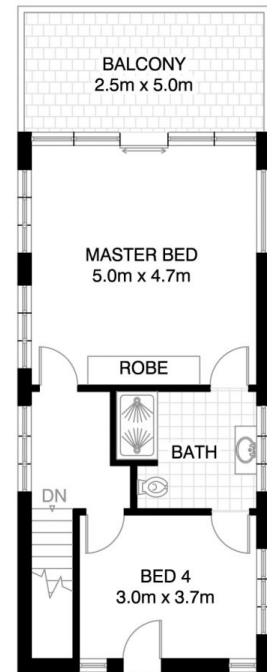
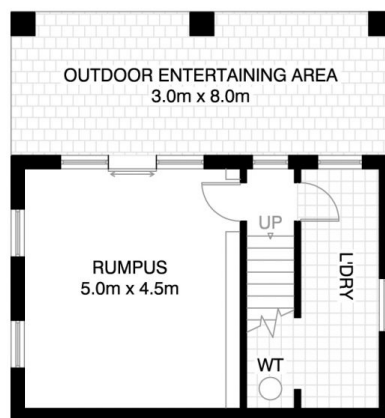
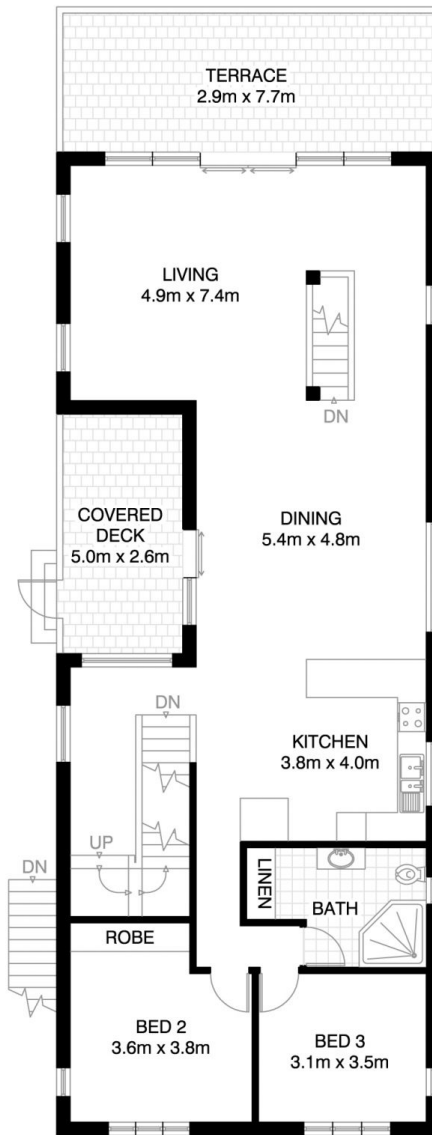
View : <https://www.blakeproperty.com.au/sale/nsw/north-ern-beaches/bilgola/residential/house/5745640>



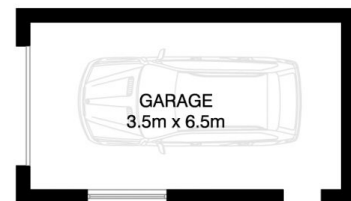
Andrew Blake
02 9973 4444



SITE PLAN



GROUND FLOOR



(NOT ACTUAL LOCATION)



BILGOLA

244 LOWER PLATEAU ROAD

*INTERNAL FLOOR AREA APPROX 360m²
INCLUDING BALCONIES, ENTERTAINING AREA
AND GARAGE



*PLANS SHOWN ONLY INDICATIVE OF LAYOUT. DIMENSIONS ARE APPROXIMATE.

Floor plan supplied by V-Mark Design Pty Ltd. This floor plan is provided for indicative purposes only. Measurements are approximate and not to scale. The vendor, agency and supplier will accept no liability for its accuracy. Interested parties are advised to make their own independent enquiries.