



26 Bilga Avenue Bilgola NSW

4 3 2

a brilliant contemporary architectural design has left no stone unturned to make this sensational home with level access, the ultimate in versatile living and family entertaining.

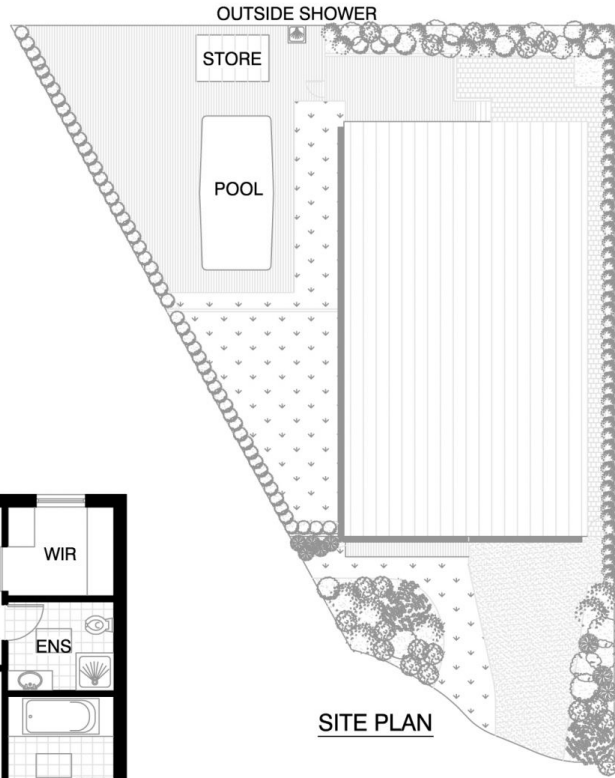
bathed in the light of a true north aspect, the "big sky" panoramic views from this masterpiece stretch out across the valley to the vast bushland of Ku-Ring-Gai-National Park, with a generous outlook over Pittwater, Lion Island and the Pacific Ocean.

bask in winter sun or cooling summer breezes on the oversized terrace, while the kids make the most out of the fully enclosed, level lawn or the solar heated pool with generous timber sundeck and outdoor shower. clean lines, chic neutral tones and landscaped tropical gardens work magically together to create a luxurious, resort-inspired

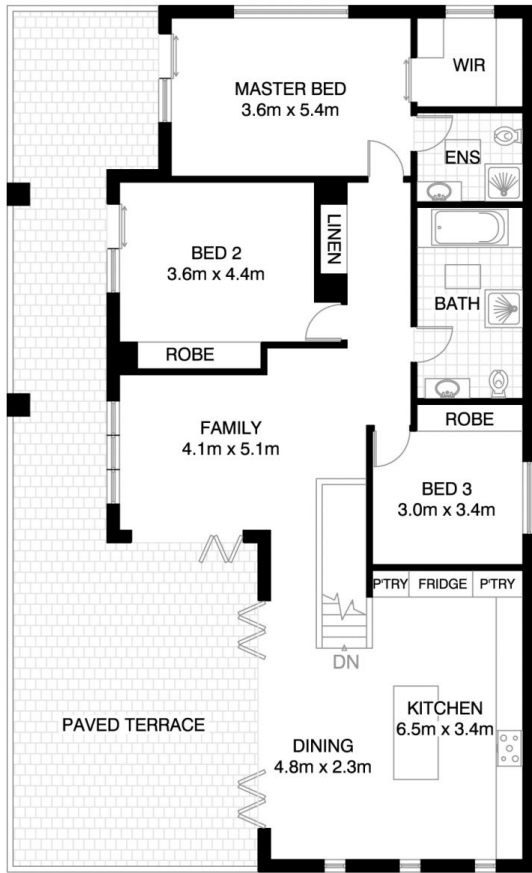
View : <https://www.blakeproperty.com.au/sale/nsw/north-ern-beaches/bilgola/residential/house/5745630>



Andrew Blake
02 9973 4444



SITE PLAN

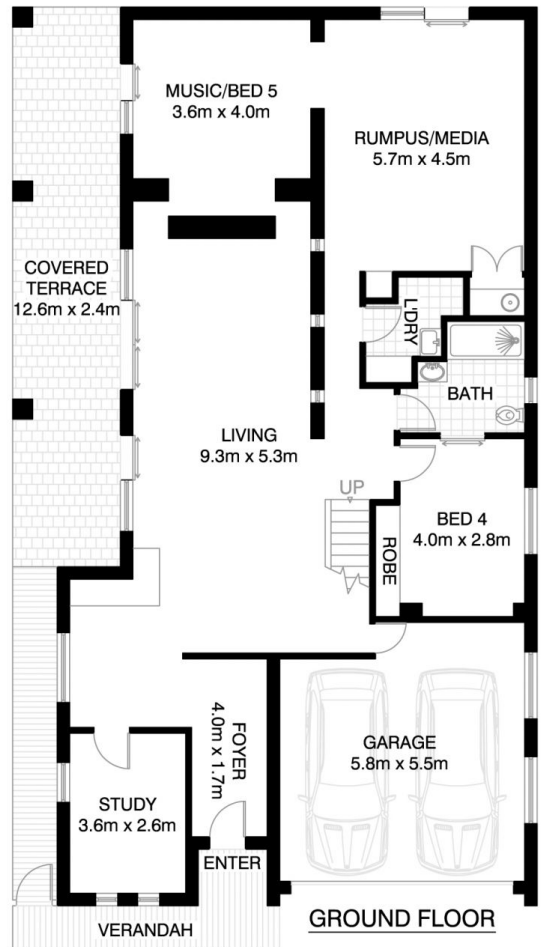


FIRST FLOOR



BILGOLA PLATEAU 26 BILGA AVENUE

*INTERNAL FLOOR AREA APPROX 431m²



GROUND FLOOR



*PLANS SHOWN ONLY INDICATIVE OF LAYOUT. DIMENSIONS ARE APPROXIMATE.

Floor plan supplied by V-Mark Design Pty Ltd. This floor plan is provided for indicative purposes only. Measurements are approximate and not to scale. The vendor, agency and supplier will accept no liability for its accuracy. Interested parties are advised to make their own independent enquiries.