



**8/1 Bilambee Avenue Bilgola NSW**

2 2 2

situated in an outstanding location in one of Bilgola Plateau's popular retail shopping strips, sits this unique and very flexible 'shop top' housing investment opportunity with dual street frontage from Bilambee Avenue through to Bilambee Lane.

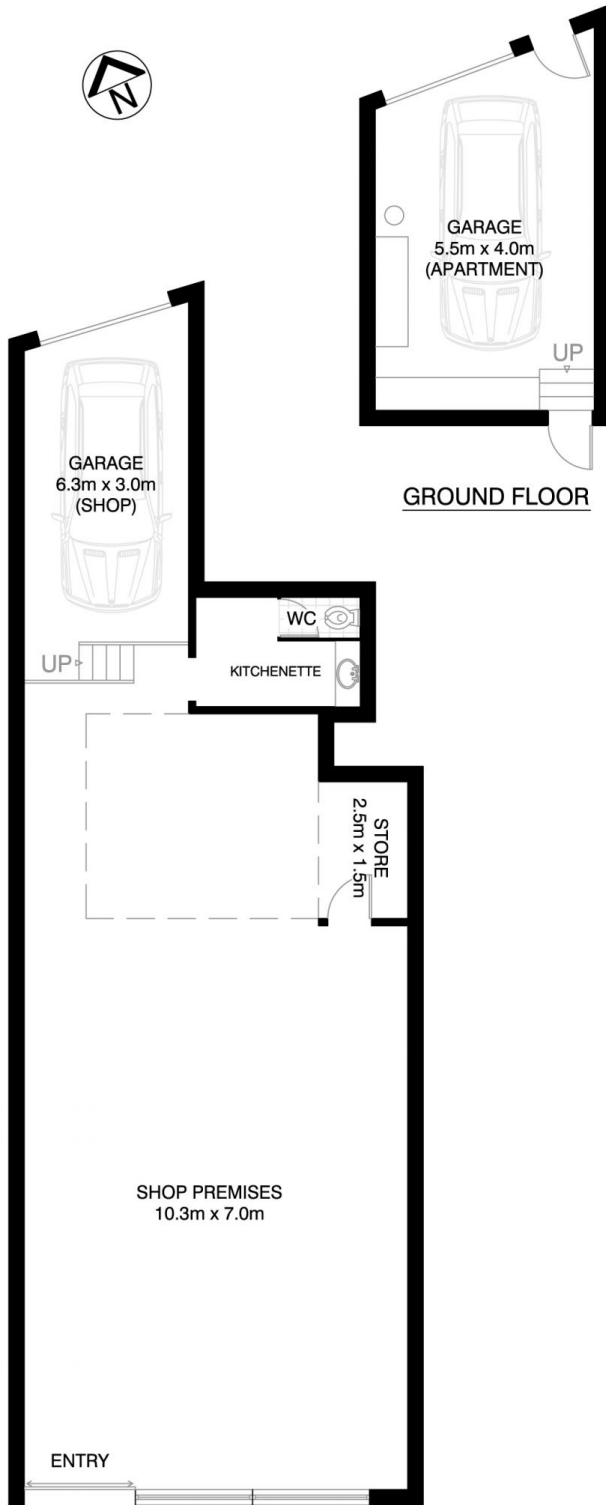
**View :** <https://www.blakeproperty.com.au/sale/nsw/north-ern-beaches/bilgola/residential/apartment/5745614>

this rare offering consists of an ultra spacious, two bedroom apartment and an approximately 106sqm retail shopfront or office space. investors, you will be spoilt for choice - live in the apartment upstairs and earn an income through the already existing income stream from the shopfront below. alternatively, you could lease both spaces or business owners may even utilise the shop downstairs to suit their own needs in the future - the opportunities are endless.



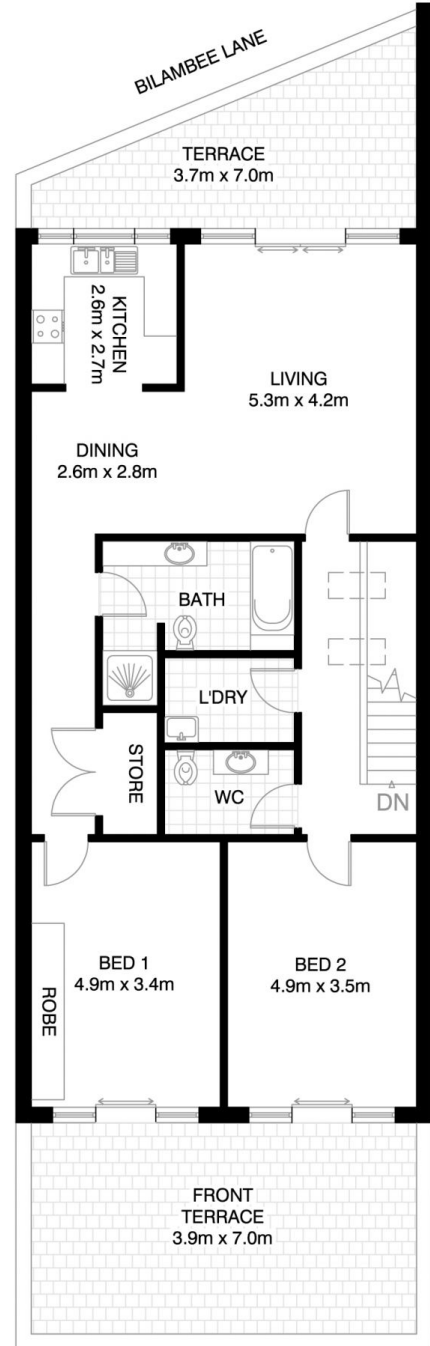
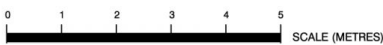
**Andrew Blake**  
02 9973 4444

apartment highlights:



**GROUND FLOOR - SHOP**

\*INTERNAL FLOOR AREA APPROX 106m<sup>2</sup>  
EXCLUDING GARAGE



**FIRST FLOOR - APARTMENT**

\*INTERNAL FLOOR AREA APPROX 111m<sup>2</sup>  
EXCLUDING GARAGE

# BILGOLA PLATEAU

## 8/1 BILAMBEE AVENUE



\*PLANS SHOWN ONLY INDICATIVE OF LAYOUT. DIMENSIONS ARE APPROXIMATE.

Floor plan supplied by V-Mark Design Pty Ltd. This floor plan is provided for indicative purposes only. Measurements are approximate and not to scale. The vendor, agency and supplier will accept no liability for its accuracy. Interested parties are advised to make their own independent enquiries.