



location shot - only 50m from your doorstep



6 Calvert Parade Newport NSW

4 3 2

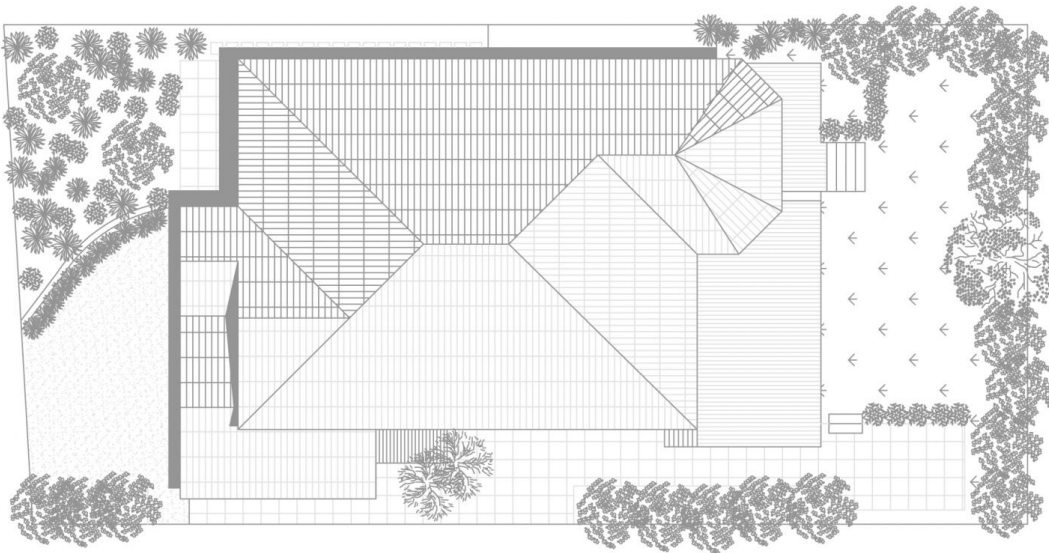
set in possibly the best street in Newport's 'golden triangle', this expansive contemporary residence offers a lifestyle of space, style and quality. with the sand and surf of Newport Beach only 50 metres approximately from your doorstep and shops, cafes, restaurants and buses just around the corner you can't get a more convenient lifestyle than this.

View : <https://www.blakeproperty.com.au/sale/nsw/north-ern-beaches/newport/residential/house/5745599>

designed for easycare entertaining and family living, this immaculate home provides a flowing floorplan with elegant formal lounge and dining plus generous indoor/outdoor family living. the casual living area has a light and airy beach-side feel with bay window and patio doors opening out to a generous entertaining deck. the near new, stylish open plan gas kitchen features Caesarstone benchtops and breakfast bar, glass splashbacks and extensive storage. with reverse cycle air-conditioning, it's the ideal place to relax with friends and family.



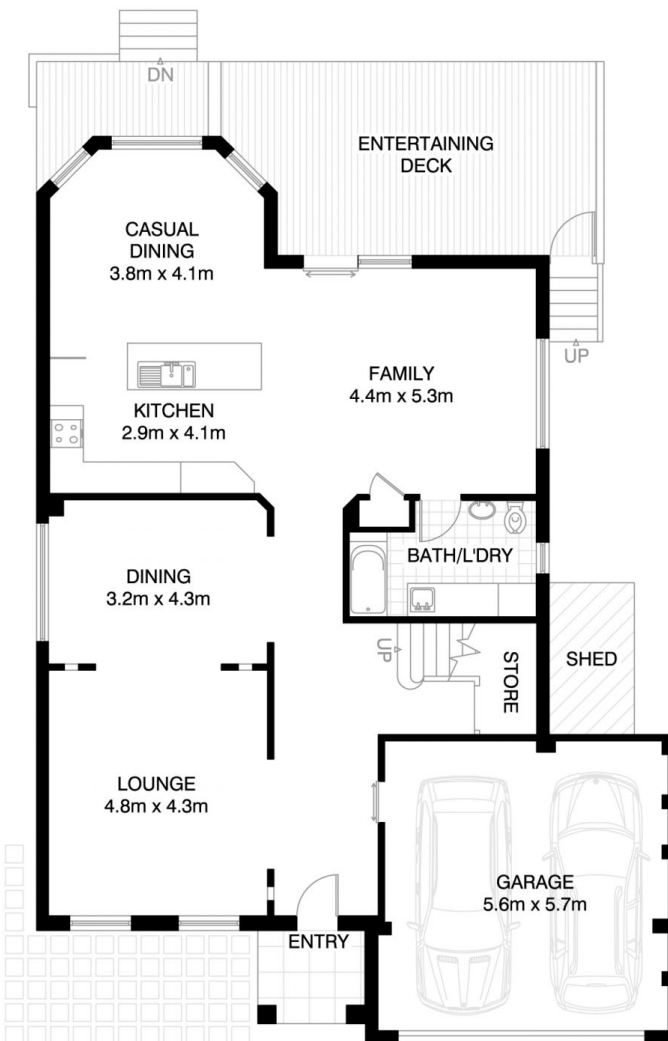
Andrew Blake
02 9973 4444



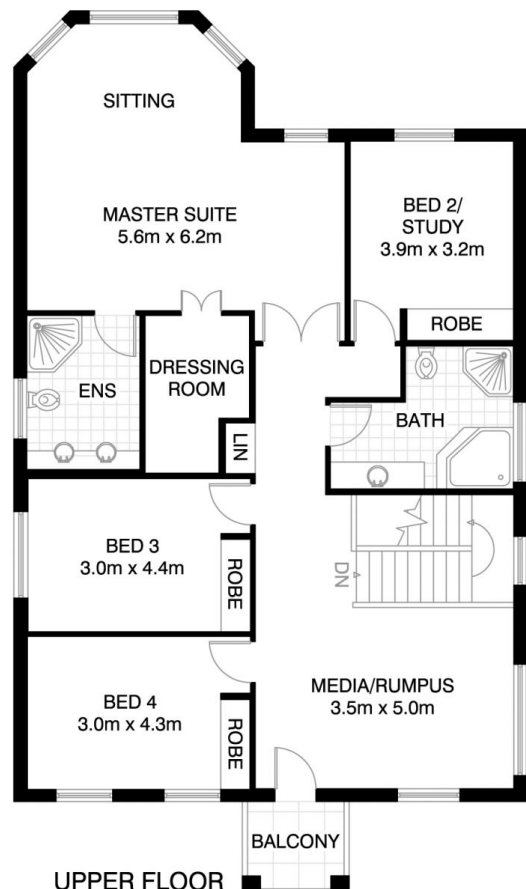
SITE PLAN

NEWPORT 6 CALVERT PARADE

*INTERNAL FLOOR AREA APPROX 278m²
INCL GARAGE



GROUND FLOOR



UPPER FLOOR



*PLANS SHOWN ONLY INDICATIVE OF LAYOUT. DIMENSIONS ARE APPROXIMATE.

Floor plan supplied by V-Mark Design Pty Ltd. This floor plan is provided for indicative purposes only. Measurements are approximate and not to scale. The vendor, agency and supplier will accept no liability for its accuracy. Interested parties are advised to make their own independent enquiries.

