



**45-47 Hillside Road NEWPORT NSW**

4 3 2

This unique country like estate is nestled on a double block of private established grounds and is a rare find indeed, with sweeping district and ocean views. A warm and inviting homestead offering an exceptional level of privacy and is only moments from the surf and cosmopolitan beachside lifestyle.

Featuring:

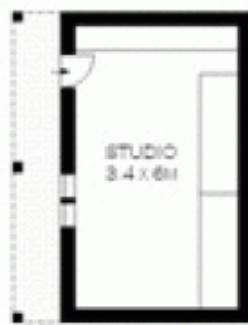
\* 4 bedrooms, 3 bathrooms, all showcasing the original character, richly hued timber floorboards and architraves, light and airy upper gallery level addition with library/home office/study and large master bedroom with ensuite

\* main living area with eye catching central stone fireplace dividing the country-style kitchen and second airy lounge room with full window seating open to deep wrap around

**View** : <https://www.blakeproperty.com.au/sale/nsw/north-ern-beaches/newport/residential/house/5745454>



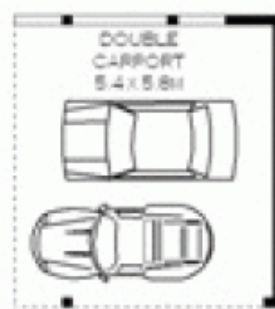
**Andrew Blake**  
02 9973 4444



MAIN LEVEL



UPPER LEVEL



STREET LEVEL



MAIN LEVEL



SCALE (METRES)

INT : 243M<sup>2</sup>  
EXT : 2713M<sup>2</sup>

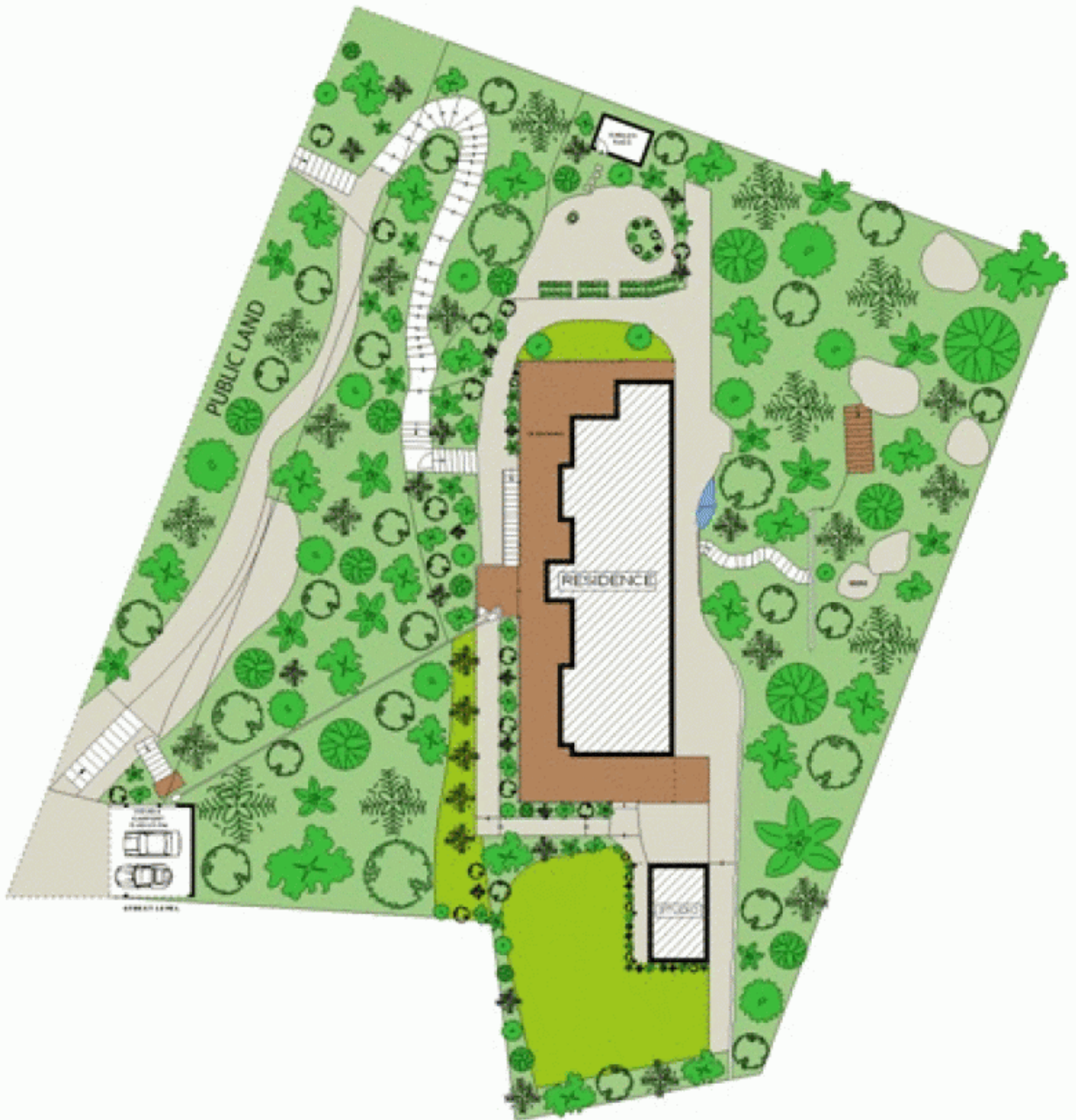


PLANS SHOWN ONLY INDICATIVE OF LAYOUT. DIMENSIONS ARE APPROXIMATE.

Floor plan supplied by [www.thepicturedesk.com.au](http://www.thepicturedesk.com.au). This floor plan is provided for indicative purposes only. Measurements are approximate and not to scale. The vendor, agency and supplier will accept no liability for its accuracy. Interested parties are advised to make their own independent enquiries.

45-47 HILLSIDE ROAD

NEWPORT



SITE PLAN (NOT TO SCALE)

PLANS SHOWN ONLY INDICATIVE OF LAYOUT. DIMENSIONS ARE APPROXIMATE.

Floor plan supplied by [www.thepicturedesk.com.au](http://www.thepicturedesk.com.au). This floor plan is provided for indicative purposes only. Measurements are approximate and not to scale. The vendor, agency and supplier will accept no liability for its accuracy. Interested parties are advised to make their own independent enquiries.

