

## AVALON

4 🛏 3 🚿 2 🚗

The Dome House - an architectural inspiration!

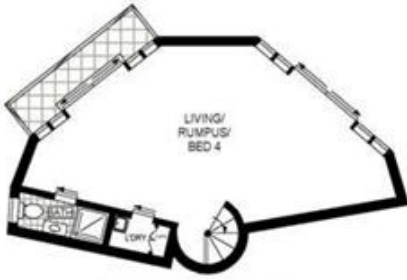
This extraordinary masterpiece borders both Riverview Road and Trappers Way, is a truly unique and sophisticated architectural design.

Spectacular views are offered here, extending across Pittwater and over towards Towlers Bay and beyond to the beautiful Ku-ring-gai Chase National Park.

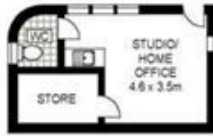
This distinctive family home of exceptional appeal offers a spacious floor plan of 3 to 4 bedrooms, the choice of two living areas and a separate studio or retreat with its own storage & bathroom facilities.

Perfection in design with an artistically molded stairwell and soft curving brick features to the interior. Sunny balconies

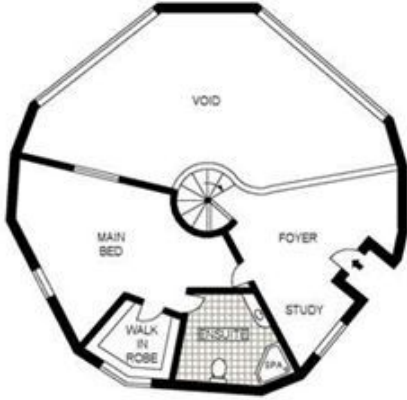
**View** : <https://www.blakeproperty.com.au/sale/nsw/north-ern-beaches/avalon/residential/house/5745428>



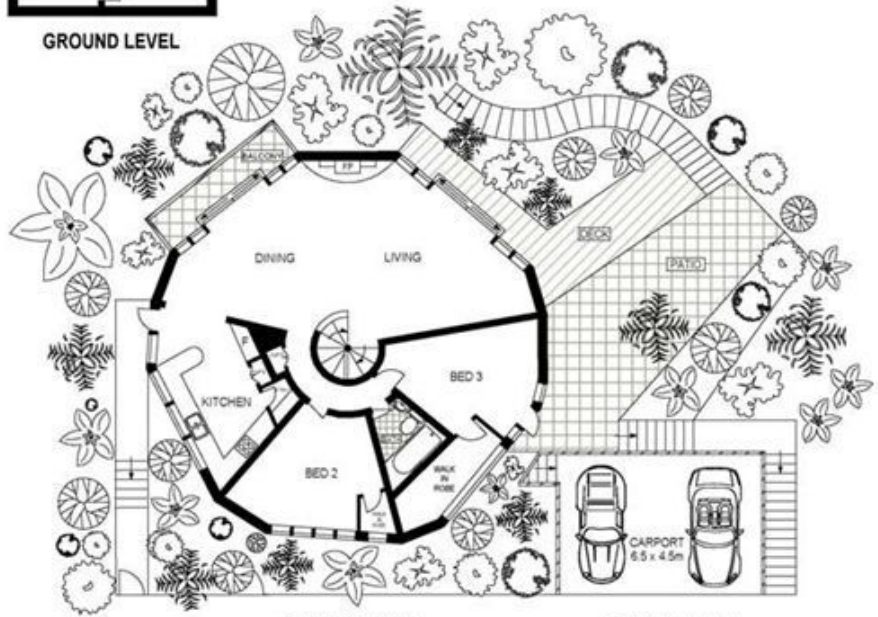
LOWER GROUND LEVEL



GROUND LEVEL



UPPER LEVEL



GROUND LEVEL

STREET LEVEL



SCALE (METRES)

PLANS SHOWN ONLY INDICATIVE OF LAYOUT. DIMENSIONS ARE APPROXIMATE.



52 TRAPPERS WAY

CLAREVILLE