



AVALON

3 2 1

Boasting a private sub-tropical outlook with extensive north facing indoor and outdoor living spaces, this relaxed home, possibly one of the first homes to be built in Palmgrove Road has been designed to soak up the sun.

View : <https://www.blakeproperty.com.au/sale/nsw/north-ern-beaches/avalon/residential/house/5745419>

Featuring:

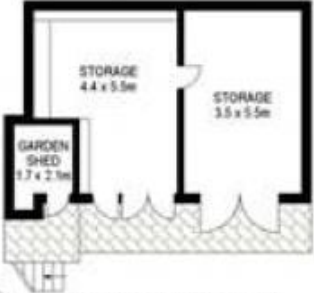
- a conservatory-style open plan lounge and dining entertaining rooms with a cosy open fire place, framed by floor-to-ceiling glass doors and windows
- a choice of sundrenched alfresco areas including an extensive entertaining deck and tranquil paved terrace surrounded by secure level lawns
- 3 generous bedrooms with built-in robes plus a master bedroom with an ensuite and walk-in robe



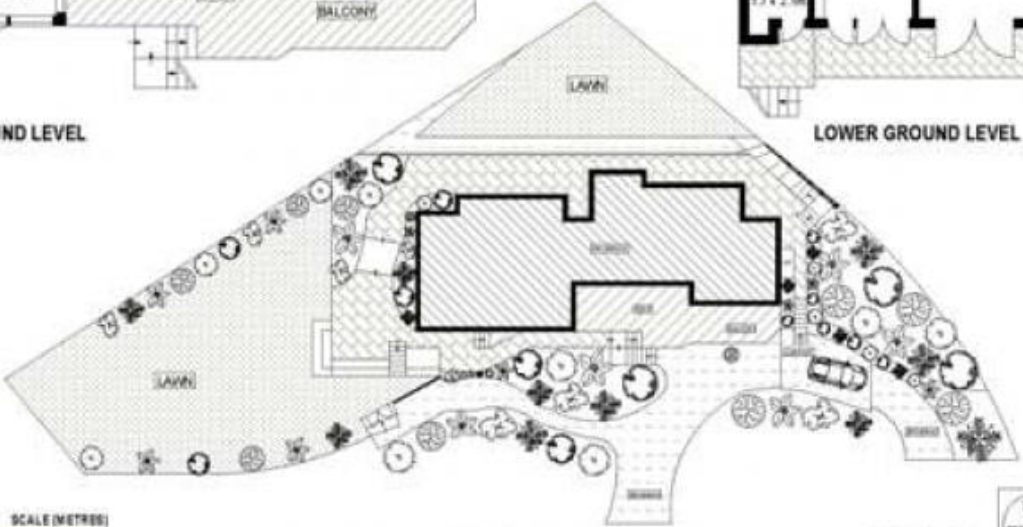
Andrew Blake
02 9973 4444



GROUND LEVEL



LOWER GROUND LEVEL



SITE PLAN (NOT TO SCALE)



SCALE (METRES)

PLANTINGS ARE ONLY INDICATIVE OF LAYOUT. DIMENSIONS ARE APPROXIMATE.

INT : 186m²



59 PALMGROVE ROAD

AVALON